

Anti-HECW2 Antibody
Rabbit polyclonal antibody to HECW2
Catalog # AP60112**Specification**

Anti-HECW2 Antibody - Product Information

Application	WB, IF
Primary Accession	O9P2P5
Other Accession	Q616G8
Reactivity	Human, Mouse, Rat
Host	Rabbit
Clonality	Polyclonal
Calculated MW	175769

Anti-HECW2 Antibody - Additional Information**Gene ID** 57520**Other Names**

KIAA1301; NEDL2; E3 ubiquitin-protein ligase HECW2; HECT, C2 and WW domain-containing protein 2; NEDD4-like E3 ubiquitin-protein ligase 2

Target/Specificity

Recognizes endogenous levels of HECW2 protein.

DilutionWB~~WB (1/500 - 1/1000), IF/IC (1/100 - 1/500)
IF~~WB (1/500 - 1/1000), IF/IC (1/100 - 1/500)**Format**

Liquid in 0.42% Potassium phosphate, 0.87% Sodium chloride, pH 7.3, 30% glycerol, and 0.09% (W/V) sodium azide.

Storage

Store at -20 °C. Stable for 12 months from date of receipt

Anti-HECW2 Antibody - Protein Information**Name** HECW2**Synonyms** KIAA1301, NEDL2**Function**E3 ubiquitin-protein ligase that mediates ubiquitination of TP73. Acts to stabilize TP73 and enhance activation of transcription by TP73 (PubMed: [12890487](http://www.uniprot.org/citations/12890487)). Involved in the regulation of mitotic metaphase/anaphase transition (PubMed: [24163370](http://www.uniprot.org/citations/24163370)).

Cellular Location

Cytoplasm. Cytoplasm, cytoskeleton, spindle

Tissue Location

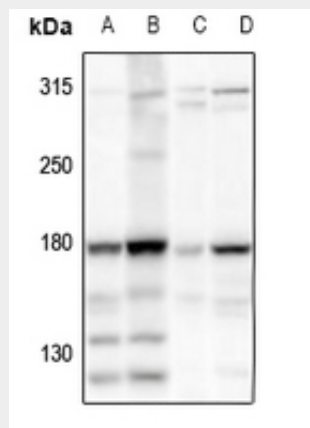
Predominantly expressed in adult brain, lung and heart.

Anti-HECW2 Antibody - Protocols

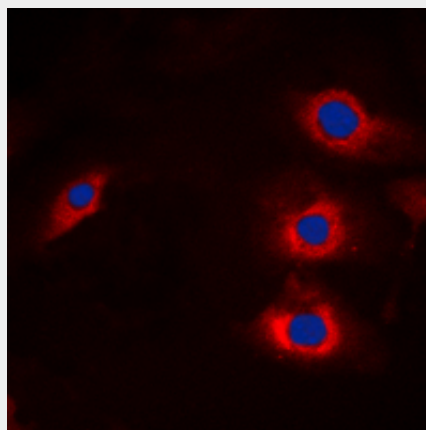
Provided below are standard protocols that you may find useful for product applications.

- [Western Blot](#)
- [Blocking Peptides](#)
- [Dot Blot](#)
- [Immunohistochemistry](#)
- [Immunofluorescence](#)
- [Immunoprecipitation](#)
- [Flow Cytometry](#)
- [Cell Culture](#)

Anti-HECW2 Antibody - Images



Western blot analysis of HECW2 expression in H1792 (A), A549 (B), PMVEC (C), AML12 (D) whole cell lysates.



Immunofluorescent analysis of HECW2 staining in A549 cells. Formalin-fixed cells were permeabilized with 0.1% Triton X-100 in TBS for 5-10 minutes and blocked with 3% BSA-PBS for

30 minutes at room temperature. Cells were probed with the primary antibody in 3% BSA-PBS and incubated overnight at 4 °C in a humidified chamber. Cells were washed with PBST and incubated with a DyLight 594-conjugated secondary antibody (red) in PBS at room temperature in the dark. DAPI was used to stain the cell nuclei (blue).

Anti-HECW2 Antibody - Background

KLH-conjugated synthetic peptide encompassing a sequence within the center region of human HECW2. The exact sequence is proprietary.