

**Anti-MRPL16 Antibody**  
Rabbit polyclonal antibody to MRPL16  
Catalog # AP60108

### Specification

---

#### Anti-MRPL16 Antibody - Product Information

|                   |                        |
|-------------------|------------------------|
| Application       | WB                     |
| Primary Accession | <a href="#">O9NX20</a> |
| Reactivity        | Human, Monkey, Pig     |
| Host              | Rabbit                 |
| Clonality         | Polyclonal             |
| Calculated MW     | 28449                  |

#### Anti-MRPL16 Antibody - Additional Information

**Gene ID** 54948

#### Other Names

39S ribosomal protein L16 mitochondrial; L16mt; MRP-L16

#### Target/Specificity

Recognizes endogenous levels of MRPL16 protein.

#### Dilution

WB~~WB (1/500 - 1/1000), IH (1/100 - 1/200)

#### Format

Liquid in 0.42% Potassium phosphate, 0.87% Sodium chloride, pH 7.3, 30% glycerol, and 0.09% (W/V) sodium azide.

#### Storage

Store at -20 °C. Stable for 12 months from date of receipt

#### Anti-MRPL16 Antibody - Protein Information

**Name** MRPL16

#### Cellular Location

Mitochondrion

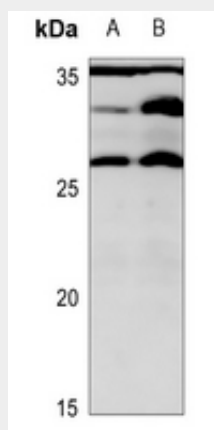
#### Anti-MRPL16 Antibody - Protocols

Provided below are standard protocols that you may find useful for product applications.

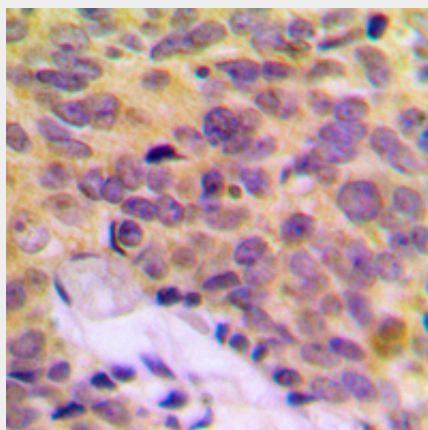
- [Western Blot](#)
- [Blocking Peptides](#)

- [Dot Blot](#)
- [Immunohistochemistry](#)
- [Immunofluorescence](#)
- [Immunoprecipitation](#)
- [Flow Cytometry](#)
- [Cell Culture](#)

### Anti-MRPL16 Antibody - Images



Western blot analysis of MRPL16 expression in HEK293T (A), A549 (B) whole cell lysates.



Immunohistochemical analysis of MRPL16 staining in human breast cancer formalin fixed paraffin embedded tissue section. The section was pre-treated using heat mediated antigen retrieval with sodium citrate buffer (pH 6.0). The section was then incubated with the antibody at room temperature and detected using an HRP conjugated compact polymer system. DAB was used as the chromogen. The section was then counterstained with haematoxylin and mounted with DPX.

### Anti-MRPL16 Antibody - Background

KLH-conjugated synthetic peptide encompassing a sequence within the C-term region of human MRPL16. The exact sequence is proprietary.