

**Anti-Kanadaptin Antibody**  
Rabbit polyclonal antibody to Kanadaptin  
Catalog # AP60095

**Specification**

---

**Anti-Kanadaptin Antibody - Product Information**

Application	WB, IF
Primary Accession	<a href="#">O9BWU0</a>
Reactivity	Human, Mouse, Rat, Monkey
Host	Rabbit
Clonality	Polyclonal
Calculated MW	82890

**Anti-Kanadaptin Antibody - Additional Information**

Gene ID 22950

**Other Names**

Kanadaptin; Human lung cancer oncogene 3 protein; HLC-3; Kidney anion exchanger adapter protein; Solute carrier family 4 anion exchanger member 1 adapter protein

**Target/Specificity**

Recognizes endogenous levels of Kanadaptin protein.

**Dilution**

WB~~WB (1/500 - 1/1000), IH (1/100 - 1/200), IF/IC (1/100 - 1/500)  
IF~~WB (1/500 - 1/1000), IH (1/100 - 1/200), IF/IC (1/100 - 1/500)

**Format**

Liquid in 0.42% Potassium phosphate, 0.87% Sodium chloride, pH 7.3, 30% glycerol, and 0.09% (W/V) sodium azide.

**Storage**

Store at -20 °C. Stable for 12 months from date of receipt

**Anti-Kanadaptin Antibody - Protein Information**

Name SLC4A1AP

**Cellular Location**

Nucleus. Cytoplasm. Note=Mainly nuclear. Small amounts are found in the cytoplasm

**Tissue Location**

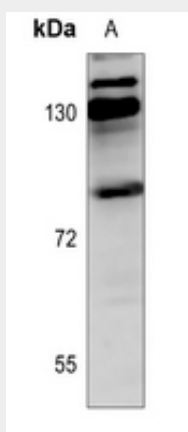
Ubiquitously expressed.

**Anti-Kanadaptin Antibody - Protocols**

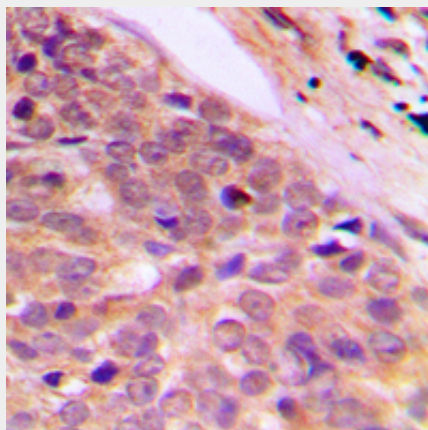
Provided below are standard protocols that you may find useful for product applications.

- [Western Blot](#)
- [Blocking Peptides](#)
- [Dot Blot](#)
- [Immunohistochemistry](#)
- [Immunofluorescence](#)
- [Immunoprecipitation](#)
- [Flow Cytometry](#)
- [Cell Culture](#)

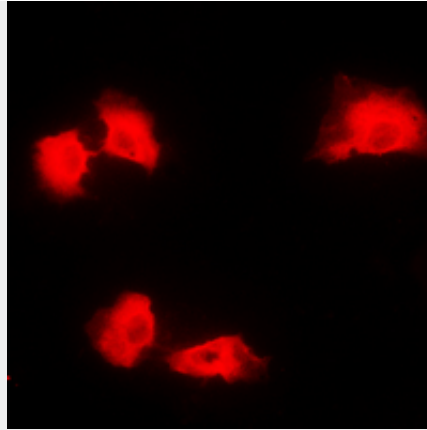
#### Anti-Kanadaptin Antibody - Images



Western blot analysis of Kanadaptin expression in mouse testis (A) whole cell lysates.



Immunohistochemical analysis of Kanadaptin staining in human breast cancer formalin fixed paraffin embedded tissue section. The section was pre-treated using heat mediated antigen retrieval with sodium citrate buffer (pH 6.0). The section was then incubated with the antibody at room temperature and detected using an HRP conjugated compact polymer system. DAB was used as the chromogen. The section was then counterstained with haematoxylin and mounted with DPX.



Immunofluorescent analysis of Kanadaptin staining in A431 cells. Formalin-fixed cells were permeabilized with 0.1% Triton X-100 in TBS for 5-10 minutes and blocked with 3% BSA-PBS for 30 minutes at room temperature. Cells were probed with the primary antibody in 3% BSA-PBS and incubated overnight at 4 °C in a humidified chamber. Cells were washed with PBST and incubated with a DyLight 594-conjugated secondary antibody (red) in PBS at room temperature in the dark.

#### **Anti-Kanadaptin Antibody - Background**

KLH-conjugated synthetic peptide encompassing a sequence within the center region of human Kanadaptin. The exact sequence is proprietary.