

Anti-ARNT2 Antibody
Rabbit polyclonal antibody to ARNT2
Catalog # AP60079

Specification

Anti-ARNT2 Antibody - Product Information

Application	WB
Primary Accession	O9HBZ2
Other Accession	O61324
Reactivity	Human, Mouse, Rat, Zebrafish
Host	Rabbit
Clonality	Polyclonal
Calculated MW	78691

Anti-ARNT2 Antibody - Additional Information

Gene ID 9915

Other Names

BHLHE1; KIAA0307; Aryl hydrocarbon receptor nuclear translocator 2; ARNT protein 2; Class E basic helix-loop-helix protein 1; bHLHe1

Target/Specificity

Recognizes endogenous levels of ARNT2 protein.

Dilution

WB~~WB (1/500 - 1/1000), IH (1/100 - 1/200)

Format

Liquid in 0.42% Potassium phosphate, 0.87% Sodium chloride, pH 7.3, 30% glycerol, and 0.09% (W/V) sodium azide.

Storage

Store at -20 °C. Stable for 12 months from date of receipt

Anti-ARNT2 Antibody - Protein Information

Name ARNT2

Synonyms BHLHE1, KIAA0307

Function

Transcription factor that plays a role in the development of the hypothalamo-pituitary axis, postnatal brain growth, and visual and renal function (PubMed: [24022475](http://www.uniprot.org/citations/24022475)). Specifically recognizes the xenobiotic response element (XRE).

Cellular Location

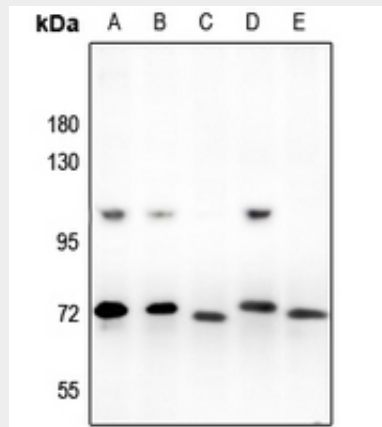
Nucleus {ECO:0000255|PROSITE-ProRule:PRU00981, ECO:0000269|PubMed:24465693}

Anti-ARNT2 Antibody - Protocols

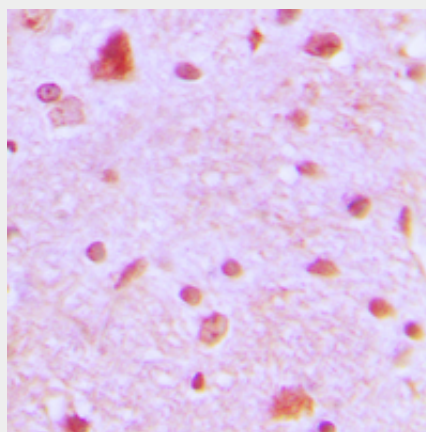
Provided below are standard protocols that you may find useful for product applications.

- [Western Blot](#)
- [Blocking Peptides](#)
- [Dot Blot](#)
- [Immunohistochemistry](#)
- [Immunofluorescence](#)
- [Immunoprecipitation](#)
- [Flow Cytometry](#)
- [Cell Culture](#)

Anti-ARNT2 Antibody - Images



Western blot analysis of ARNT2 expression in K562 (A), A549 (B), HeLa (C), Beas2B (D), BV2 (E) whole cell lysates.



Immunohistochemical analysis of ARNT2 staining in human brain formalin fixed paraffin embedded tissue section. The section was pre-treated using heat mediated antigen retrieval with sodium citrate buffer (pH 6.0). The section was then incubated with the antibody at room temperature and detected using an HRP conjugated compact polymer system. DAB was used as the chromogen. The section was then counterstained with haematoxylin and mounted with DPX.

Anti-ARNT2 Antibody - Background

KLH-conjugated synthetic peptide encompassing a sequence within the N-term region of human ARNT2. The exact sequence is proprietary.