

**Anti-ZEB2 Antibody**  
Rabbit polyclonal antibody to ZEB2  
Catalog # AP60078

### Specification

---

#### Anti-ZEB2 Antibody - Product Information

Application	WB
Primary Accession	<a href="#">O60315</a>
Reactivity	Human, Rat, Rabbit, Monkey
Host	Rabbit
Clonality	Polyclonal
Calculated MW	136447

#### Anti-ZEB2 Antibody - Additional Information

Gene ID 9839

#### Other Names

KIAA0569; SIP1; ZFH1B; ZFX1B; Zinc finger E-box-binding homeobox 2; Smad-interacting protein 1; SMADIP1; Zinc finger homeobox protein 1b

#### Target/Specificity

Recognizes endogenous levels of ZEB2 protein.

#### Dilution

WB~~WB (1/500 - 1/1000), IH (1/100 - 1/200)

#### Format

Liquid in 0.42% Potassium phosphate, 0.87% Sodium chloride, pH 7.3, 30% glycerol, and 0.09% (W/V) sodium azide.

#### Storage

Store at -20 °C. Stable for 12 months from date of receipt

#### Anti-ZEB2 Antibody - Protein Information

Name ZEB2 ([HGNC:14881](#))

#### Function

Transcriptional inhibitor that binds to DNA sequence 5'- CACCT-3' in different promoters (PubMed: [16061479](http://www.uniprot.org/citations/16061479)), PubMed: [20516212](http://www.uniprot.org/citations/20516212)). Represses transcription of E-cadherin (PubMed: [16061479](http://www.uniprot.org/citations/16061479)). Represses expression of MEOX2 (PubMed: [20516212](http://www.uniprot.org/citations/20516212)).

#### Cellular Location

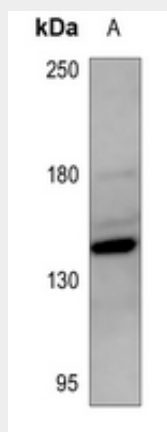
Nucleus. Chromosome

### Anti-ZEB2 Antibody - Protocols

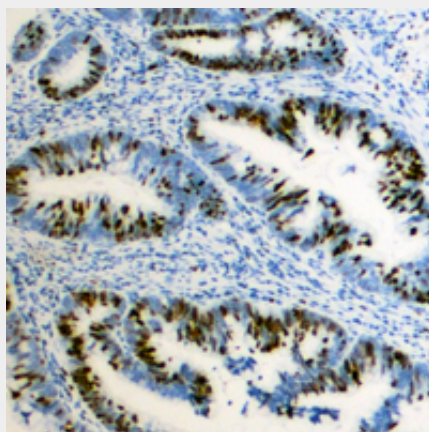
Provided below are standard protocols that you may find useful for product applications.

- [Western Blot](#)
- [Blocking Peptides](#)
- [Dot Blot](#)
- [Immunohistochemistry](#)
- [Immunofluorescence](#)
- [Immunoprecipitation](#)
- [Flow Cytometry](#)
- [Cell Culture](#)

### Anti-ZEB2 Antibody - Images



Western blot analysis of ZEB2 expression in mouse liver (A) whole cell lysates.



Immunohistochemical analysis of ZEB2 staining in human colon cancer formalin fixed paraffin embedded tissue section. The section was pre-treated using heat mediated antigen retrieval with sodium citrate buffer (pH 6.0). The section was then incubated with the antibody at room temperature and detected using an HRP conjugated compact polymer system. DAB was used as the chromogen. The section was then counterstained with haematoxylin and mounted with DPX.

### Anti-ZEB2 Antibody - Background

KLH-conjugated synthetic peptide encompassing a sequence within the N-term region of human ZEB2. The exact sequence is proprietary.