

Anti-ARMCX2 Antibody
Rabbit polyclonal antibody to ARMCX2
Catalog # AP60076

Specification

Anti-ARMCX2 Antibody - Product Information

Application	WB
Primary Accession	O7L311
Other Accession	Q6A058
Reactivity	Human, Mouse, Rat, Monkey
Host	Rabbit
Clonality	Polyclonal
Calculated MW	65683

Anti-ARMCX2 Antibody - Additional Information

Gene ID 9823

Other Names

ALEX2; KIAA0512; Armadillo repeat-containing X-linked protein 2; ARM protein lost in epithelial cancers on chromosome X 2; Protein ALEX2

Target/Specificity

Recognizes endogenous levels of ARMCX2 protein.

Dilution

WB~~WB (1/500 - 1/1000)

Format

Liquid in 0.42% Potassium phosphate, 0.87% Sodium chloride, pH 7.3, 30% glycerol, and 0.09% (W/V) sodium azide.

Storage

Store at -20 °C. Stable for 12 months from date of receipt

Anti-ARMCX2 Antibody - Protein Information

Name ARMCX2

Synonyms ALEX2, KIAA0512

Function

May regulate the dynamics and distribution of mitochondria in neural cells.

Cellular Location

Mitochondrion {ECO:0000250|UniProtKB:Q6A058}. Mitochondrion outer membrane {ECO:0000250|UniProtKB:Q8BHS6}; Single- pass membrane protein

Tissue Location

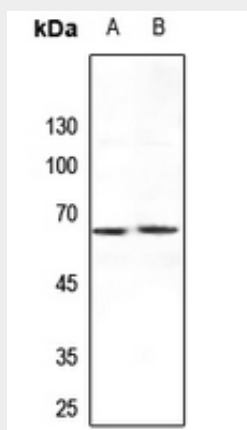
Expressed at high levels ovary, heart, testis, prostate, brain, spleen and colon. Expressed at very low levels in liver and thymus. Not expressed in peripheral blood leukocytes. Not expressed in pancreas and ovarian carcinomas

Anti-ARMCX2 Antibody - Protocols

Provided below are standard protocols that you may find useful for product applications.

- [Western Blot](#)
- [Blocking Peptides](#)
- [Dot Blot](#)
- [Immunohistochemistry](#)
- [Immunofluorescence](#)
- [Immunoprecipitation](#)
- [Flow Cytometry](#)
- [Cell Culture](#)

Anti-ARMCX2 Antibody - Images



Western blot analysis of ARM CX2 expression in mouse kidney (A), rat kidney (B) whole cell lysates.

Anti-ARMCX2 Antibody - Background

KLH-conjugated synthetic peptide encompassing a sequence within the center region of human ARM CX2. The exact sequence is proprietary.