

Anti-ADAMTS1 Antibody
Rabbit polyclonal antibody to ADAMTS1
Catalog # AP60074

Specification

Anti-ADAMTS1 Antibody - Product Information

Application	WB
Primary Accession	O9UHI8
Reactivity	Human
Host	Rabbit
Clonality	Polyclonal
Calculated MW	105358

Anti-ADAMTS1 Antibody - Additional Information

Gene ID 9510

Other Names

KIAA1346; METH1; A disintegrin and metalloproteinase with thrombospondin motifs 1; ADAM-TS 1; ADAM-TS1; ADAMTS-1; METH-1

Target/Specificity

Recognizes endogenous levels of ADAMTS1 protein.

Dilution

WB~~WB (1/500 - 1/1000)

Format

Liquid in 0.42% Potassium phosphate, 0.87% Sodium chloride, pH 7.3, 30% glycerol, and 0.09% (W/V) sodium azide.

Storage

Store at -20 °C. Stable for 12 months from date of receipt

Anti-ADAMTS1 Antibody - Protein Information

Name ADAMTS1

Synonyms KIAA1346, METH1

Function

Cleaves aggrecan, a cartilage proteoglycan, at the '1938- Glu-|-Leu-1939' site (within the chondroitin sulfate attachment domain), and may be involved in its turnover (By similarity). Has angiogenic inhibitor activity. Active metalloprotease, which may be associated with various inflammatory processes as well as development of cancer cachexia. May play a critical role in follicular rupture.

Cellular Location

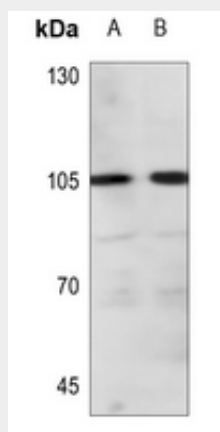
Secreted, extracellular space, extracellular matrix

Anti-ADAMTS1 Antibody - Protocols

Provided below are standard protocols that you may find useful for product applications.

- [Western Blot](#)
- [Blocking Peptides](#)
- [Dot Blot](#)
- [Immunohistochemistry](#)
- [Immunofluorescence](#)
- [Immunoprecipitation](#)
- [Flow Cytometry](#)
- [Cell Culture](#)

Anti-ADAMTS1 Antibody - Images



Western blot analysis of ADAMTS1 expression in A549 (A), H446 (B) whole cell lysates.

Anti-ADAMTS1 Antibody - Background

KLH-conjugated synthetic peptide encompassing a sequence within the center region of human ADAMTS1. The exact sequence is proprietary.