

**Anti-GALR2 Antibody**  
Rabbit polyclonal antibody to GALR2  
Catalog # AP60072

**Specification**

---

**Anti-GALR2 Antibody - Product Information**

Application	WB
Primary Accession	<a href="#">O43603</a>
Other Accession	<a href="#">O88854</a>
Reactivity	Human, Mouse, Rat, Bovine
Host	Rabbit
Clonality	Polyclonal
Calculated MW	41700

**Anti-GALR2 Antibody - Additional Information**

**Gene ID** 8811

**Other Names**

GALNR2; Galanin receptor type 2; GAL2-R; GALR-2

**Target/Specificity**

Recognizes endogenous levels of GALR2 protein.

**Dilution**

WB~~WB (1/500 - 1/1000)

**Format**

Liquid in 0.42% Potassium phosphate, 0.87% Sodium chloride, pH 7.3, 30% glycerol, and 0.09% (W/V) sodium azide.

**Storage**

Store at -20 °C. Stable for 12 months from date of receipt

**Anti-GALR2 Antibody - Protein Information**

**Name** GALR2

**Synonyms** GALNR2

**Function**

Receptor for the hormone galanin and GALP. Receptor for the hormone spexin-1 (PubMed: <a href="http://www.uniprot.org/citations/24517231" target="\_blank">24517231</a>). The activity of this receptor is mediated by G proteins that activate the phospholipase C/protein kinase C pathway (via G(q)) and that inhibit adenylyl cyclase (via G(i)).

**Cellular Location**

Cell membrane; Multi-pass membrane protein.

### Tissue Location

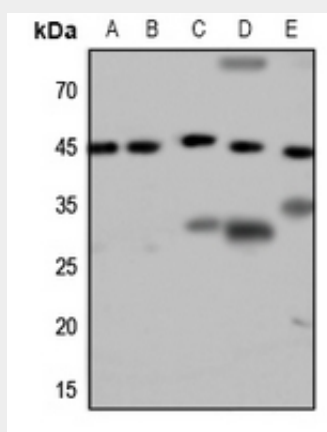
Expressed abundantly within the central nervous system in both hypothalamus and hippocampus. In peripheral tissues, the strongest expression was observed in heart, kidney, liver, and small intestine

### Anti-GALR2 Antibody - Protocols

Provided below are standard protocols that you may find useful for product applications.

- [Western Blot](#)
- [Blocking Peptides](#)
- [Dot Blot](#)
- [Immunohistochemistry](#)
- [Immunofluorescence](#)
- [Immunoprecipitation](#)

### Anti-GALR2 Antibody - Images



Western blot analysis of GALR2 expression in Hela (A), HepG2 (B), mouse brain (C), mouse kidney (D), rat kidney (E) whole cell lysates.

### Anti-GALR2 Antibody - Background

KLH-conjugated synthetic peptide encompassing a sequence within the center region of human GALR2. The exact sequence is proprietary.