

Anti-CD137L Antibody
Rabbit polyclonal antibody to CD137L
Catalog # AP60071

Specification

Anti-CD137L Antibody - Product Information

Application	WB
Primary Accession	P41273
Other Accession	P41274
Reactivity	Human, Mouse, Rat
Host	Rabbit
Clonality	Polyclonal
Calculated MW	26625

Anti-CD137L Antibody - Additional Information

Gene ID 8744

Other Names

Tumor necrosis factor ligand superfamily member 9; 4-1BB ligand; 4-1BBL

Target/Specificity

Recognizes endogenous levels of CD137L protein.

Dilution

WB~~WB (1/500 - 1/1000)

Format

Liquid in 0.42% Potassium phosphate, 0.87% Sodium chloride, pH 7.3, 30% glycerol, and 0.09% (W/V) sodium azide.

Storage

Store at -20 °C. Stable for 12 months from date of receipt

Anti-CD137L Antibody - Protein Information

Name TNFSF9

Function

Cytokine that binds to TNFRSF9. Induces the proliferation of activated peripheral blood T-cells. May have a role in activation- induced cell death (AICD). May play a role in cognate interactions between T-cells and B-cells/macrophages.

Cellular Location

Membrane; Single-pass type II membrane protein.

Tissue Location

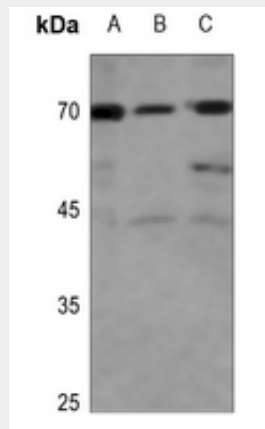
Expressed in brain, placenta, lung, skeletal muscle and kidney

Anti-CD137L Antibody - Protocols

Provided below are standard protocols that you may find useful for product applications.

- [Western Blot](#)
- [Blocking Peptides](#)
- [Dot Blot](#)
- [Immunohistochemistry](#)
- [Immunofluorescence](#)
- [Immunoprecipitation](#)
- [Flow Cytometry](#)
- [Cell Culture](#)

Anti-CD137L Antibody - Images



Western blot analysis of CD137L expression in HEK293T (A), H1688 (B), A549 (C) whole cell lysates.

Anti-CD137L Antibody - Background

KLH-conjugated synthetic peptide encompassing a sequence within the center region of human CD137L. The exact sequence is proprietary.