

Anti-CD90 Antibody
Rabbit polyclonal antibody to CD90
Catalog # AP60062

Specification

Anti-CD90 Antibody - Product Information

Application	WB
Primary Accession	P04216
Reactivity	Human
Host	Rabbit
Clonality	Polyclonal
Calculated MW	17935

Anti-CD90 Antibody - Additional Information

Gene ID 7070

Other Names

Thy-1 membrane glycoprotein; CDw90; Thy-1 antigen; CD90

Target/Specificity

Recognizes endogenous levels of CD90 protein.

Dilution

WB~~WB (1/500 - 1/1000)

Format

Liquid in 0.42% Potassium phosphate, 0.87% Sodium chloride, pH 7.3, 30% glycerol, and 0.09% (W/V) sodium azide.

Storage

Store at -20 °C. Stable for 12 months from date of receipt

Anti-CD90 Antibody - Protein Information

Name THY1

Function

May play a role in cell-cell or cell-ligand interactions during synaptogenesis and other events in the brain.

Cellular Location

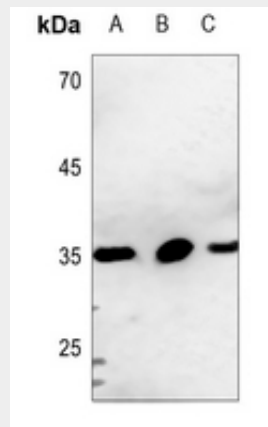
Cell membrane; Lipid-anchor, GPI- anchor

Anti-CD90 Antibody - Protocols

Provided below are standard protocols that you may find useful for product applications.

- [Western Blot](#)
- [Blocking Peptides](#)
- [Dot Blot](#)
- [Immunohistochemistry](#)
- [Immunofluorescence](#)
- [Immunoprecipitation](#)
- [Flow Cytometry](#)
- [Cell Culture](#)

Anti-CD90 Antibody - Images



Western blot analysis of CD90 expression in HEK293T (A), K562 (B), A549 (C) whole cell lysates.

Anti-CD90 Antibody - Background

KLH-conjugated synthetic peptide encompassing a sequence within the center region of human CD90. The exact sequence is proprietary.