

Anti-Matriptase Antibody
Rabbit polyclonal antibody to Matriptase
Catalog # AP60053**Specification**

Anti-Matriptase Antibody - Product Information

Application	WB
Primary Accession	O9Y5Y6
Other Accession	P56677
Reactivity	Human, Mouse
Host	Rabbit
Clonality	Polyclonal
Calculated MW	94770

Anti-Matriptase Antibody - Additional Information**Gene ID** 6768**Other Names**

PRSS14; SNC19; TADG15; Suppressor of tumorigenicity 14 protein; Matriptase; Membrane-type serine protease 1; MT-SP1; Prostamin; Serine protease 14; Serine protease TADG-15; Tumor-associated differentially-expressed gene 15 protein

Target/Specificity

Recognizes endogenous levels of Matriptase protein.

Dilution

WB~~WB (1/500 - 1/1000)

Format

Liquid in 0.42% Potassium phosphate, 0.87% Sodium chloride, pH 7.3, 30% glycerol, and 0.09% (W/V) sodium azide.

Storage

Store at -20 °C. Stable for 12 months from date of receipt

Anti-Matriptase Antibody - Protein Information**Name** ST14**Synonyms** PRSS14, SNC19, TADG15**Function**

Exhibits trypsin-like activity as defined by cleavage of synthetic substrates with Arg or Lys as the P1 site (PubMed: 10373424). Involved in the terminal differentiation of keratinocytes through prostatic (PRSS8) activation and filaggrin (FLG) processing (PubMed: 18843291).

Proteolytically cleaves and therefore activates TMPRSS13 (PubMed:28710277).

Cellular Location

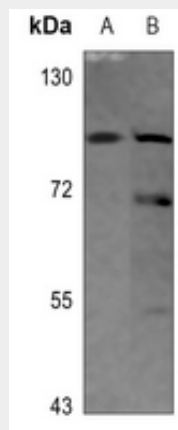
Membrane; Single-pass type II membrane protein

Anti-Matriptase Antibody - Protocols

Provided below are standard protocols that you may find useful for product applications.

- [Western Blot](#)
- [Blocking Peptides](#)
- [Dot Blot](#)
- [Immunohistochemistry](#)
- [Immunofluorescence](#)
- [Immunoprecipitation](#)
- [Flow Cytometry](#)
- [Cell Culture](#)

Anti-Matriptase Antibody - Images



Western blot analysis of Matriptase expression in HEK293T (A), CT26 (B) whole cell lysates.

Anti-Matriptase Antibody - Background

KLH-conjugated synthetic peptide encompassing a sequence within the N-term region of human Matriptase. The exact sequence is proprietary.