

**Anti-SRSF7 Antibody**  
**Rabbit polyclonal antibody to SRSF7**  
**Catalog # AP60049**

**Specification**

---

**Anti-SRSF7 Antibody - Product Information**

Application	<b>WB</b>
Primary Accession	<a href="#">O16629</a>
Other Accession	<a href="#">O8BL97</a>
Reactivity	<b>Human, Mouse, Rat, Bovine</b>
Host	<b>Rabbit</b>
Clonality	<b>Polyclonal</b>
Calculated MW	<b>27367</b>

**Anti-SRSF7 Antibody - Additional Information**

**Gene ID** 6432

**Other Names**

SFRS7; Serine/arginine-rich splicing factor 7; Splicing factor 9G8; Splicing factor, arginine/serine-rich 7

**Target/Specificity**

Recognizes endogenous levels of SRSF7 protein.

**Dilution**

WB~~WB (1/500 - 1/1000), IH (1/100 - 1/200)

**Format**

Liquid in 0.42% Potassium phosphate, 0.87% Sodium chloride, pH 7.3, 30% glycerol, and 0.09% (W/V) sodium azide.

**Storage**

Store at -20 °C. Stable for 12 months from date of receipt

**Anti-SRSF7 Antibody - Protein Information**

**Name** SRSF7

**Synonyms** SFRS7

**Function**

Required for pre-mRNA splicing. Can also modulate alternative splicing in vitro. Represses the splicing of MAPT/Tau exon 10. May function as export adapter involved in mRNA nuclear export such as of histone H2A. Binds mRNA which is thought to be transferred to the NXF1- NXT1 heterodimer for export (TAP/NXF1 pathway); enhances NXF1-NXT1 RNA- binding activity. RNA-binding is semi-sequence specific.

**Cellular Location**

Nucleus. Cytoplasm

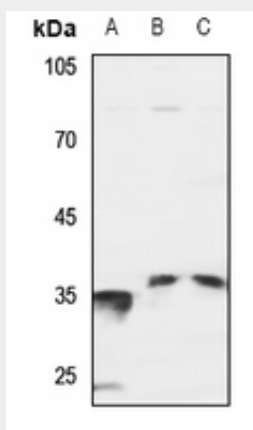
**Tissue Location**

Brain, liver, kidney and lung.

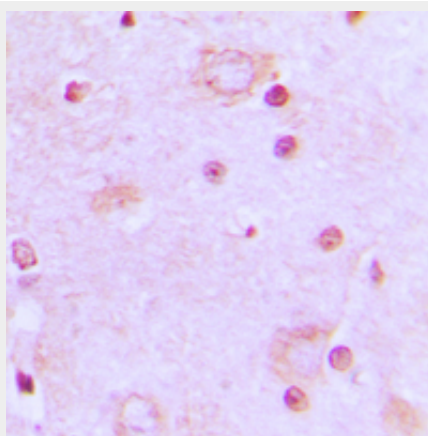
**Anti-SRSF7 Antibody - Protocols**

Provided below are standard protocols that you may find useful for product applications.

- [Western Blot](#)
- [Blocking Peptides](#)
- [Dot Blot](#)
- [Immunohistochemistry](#)
- [Immunofluorescence](#)
- [Immunoprecipitation](#)
- [Flow Cytometry](#)
- [Cell Culture](#)

**Anti-SRSF7 Antibody - Images**

Western blot analysis of SRSF7 expression in HEK293T (A), HeLa (B), H446 (C) whole cell lysates.



Immunohistochemical analysis of SRSF7 staining in human brain formalin fixed paraffin embedded tissue section. The section was pre-treated using heat mediated antigen retrieval with sodium citrate buffer (pH 6.0). The section was then incubated with the antibody at room

temperature and detected using an HRP conjugated compact polymer system. DAB was used as the chromogen. The section was then counterstained with haematoxylin and mounted with DPX.

#### **Anti-SRSF7 Antibody - Background**

KLH-conjugated synthetic peptide encompassing a sequence within the center region of human SRSF7. The exact sequence is proprietary.