



<http://www.uniprot.org/citations/18829466> target="\_blank">18829466</a>, PubMed:<a href="http://www.uniprot.org/citations/26742426" target="\_blank">26742426</a>, PubMed:<a href="http://www.uniprot.org/citations/28074573" target="\_blank">28074573</a>). Positively regulates MAPK signal transduction pathway (PubMed:<a href="http://www.uniprot.org/citations/28074573" target="\_blank">28074573</a>). Dephosphorylates GAB1, ARHGAP35 and EGFR (PubMed:<a href="http://www.uniprot.org/citations/28074573" target="\_blank">28074573</a>). Dephosphorylates ROCK2 at 'Tyr-722' resulting in stimulation of its RhoA binding activity (PubMed:<a href="http://www.uniprot.org/citations/18559669" target="\_blank">18559669</a>). Dephosphorylates CDC73 (PubMed:<a href="http://www.uniprot.org/citations/26742426" target="\_blank">26742426</a>). Dephosphorylates SOX9 on tyrosine residues, leading to inactivate SOX9 and promote ossification (By similarity). Dephosphorylates tyrosine-phosphorylated NEDD9/CAS-L (PubMed:<a href="http://www.uniprot.org/citations/19275884" target="\_blank">19275884</a>).

#### Cellular Location

Cytoplasm. Nucleus

#### Tissue Location

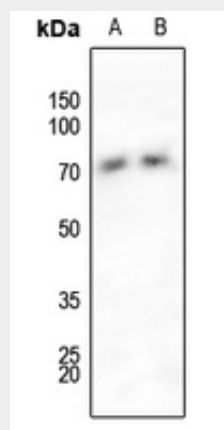
Widely expressed, with highest levels in heart, brain, and skeletal muscle.

#### Anti-SHPTP2 (pY542) Antibody - Protocols

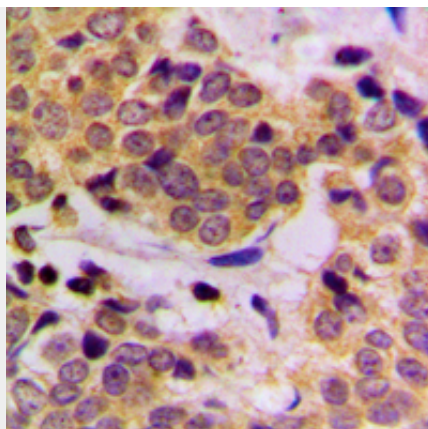
Provided below are standard protocols that you may find useful for product applications.

- [Western Blot](#)
- [Blocking Peptides](#)
- [Dot Blot](#)
- [Immunohistochemistry](#)
- [Immunofluorescence](#)
- [Immunoprecipitation](#)
- [Flow Cytometry](#)
- [Cell Culture](#)

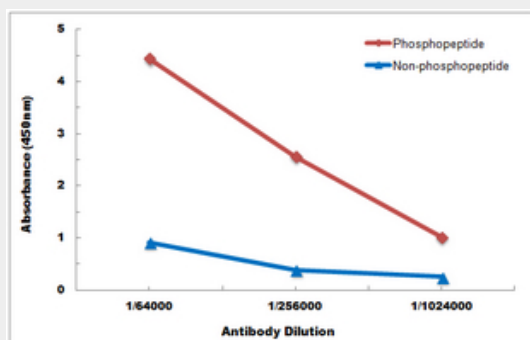
#### Anti-SHPTP2 (pY542) Antibody - Images



Western blot analysis of SHPTP2 (pY542) expression in LOVO (A), C6 (B) whole cell lysates.



Immunohistochemical analysis of SHPTP2 (pY542) staining in human breast cancer formalin fixed paraffin embedded tissue section. The section was pre-treated using heat mediated antigen retrieval with sodium citrate buffer (pH 6.0). The section was then incubated with the antibody at room temperature and detected using an HRP conjugated compact polymer system. DAB was used as the chromogen. The section was then counterstained with haematoxylin and mounted with DPX.



Direct ELISA antibody dose-response curve using Anti-SHPTP2 (pY542) Antibody. Antigen (phosphopeptide and non-phosphopeptide) concentration is 5 ug/ml. Goat Anti-Rabbit IgG (H&L) - HRP was used as the secondary antibody, and signal was developed by TMB substrate.

### Anti-SHPTP2 (pY542) Antibody - Background

KLH-conjugated synthetic peptide encompassing a sequence within the C-term region of human SHPTP2 (pY542). The exact sequence is proprietary.