

Anti-MMP16 Antibody
Rabbit polyclonal antibody to MMP16
Catalog # AP60031

Specification

Anti-MMP16 Antibody - Product Information

| | |
|-------------------|--|
| Application | WB |
| Primary Accession | P51512 |
| Other Accession | Q9WTR0 |
| Reactivity | Human, Mouse, Rat, Rabbit, Monkey, Pig, Chicken, Bovine, Dog |
| Host | Rabbit |
| Clonality | Polyclonal |
| Calculated MW | 69521 |

Anti-MMP16 Antibody - Additional Information

Gene ID 4325

Other Names

MMPX2; Matrix metalloproteinase-16; MMP-16; MMP-X2; Membrane-type matrix metalloproteinase 3; MT-MMP 3; MTMMP3; Membrane-type-3 matrix metalloproteinase; MT3-MMP; MT3MMP

Target/Specificity

Recognizes endogenous levels of MMP16 protein.

Dilution

WB~~WB (1/500 - 1/1000)

Format

Liquid in 0.42% Potassium phosphate, 0.87% Sodium chloride, pH 7.3, 30% glycerol, and 0.09% (W/V) sodium azide.

Storage

Store at -20 °C. Stable for 12 months from date of receipt

Anti-MMP16 Antibody - Protein Information

Name MMP16 ([HGNC:7162](#))

Function

Endopeptidase that degrades various components of the extracellular matrix, such as collagen type III and fibronectin. Activates progelatinase A. Involved in the matrix remodeling of blood vessels. Isoform short cleaves fibronectin and also collagen type III, but at lower rate. It has no effect on type I, II, IV and V collagen. However, upon interaction with CSPG4, it may be involved in degradation and invasion of type I collagen by melanoma cells.

Cellular Location

[Isoform Long]: Cell membrane; Single-pass type I membrane protein; Extracellular side.
Note=Localized at the cell surface of melanoma cells

Tissue Location

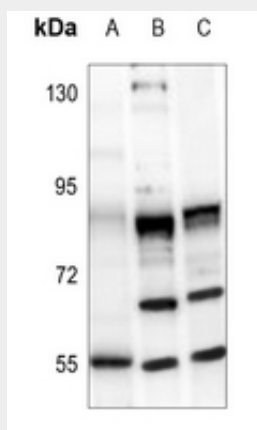
Expressed in heart, brain, placenta, ovary and small intestine. Isoform Short is found in the ovary

Anti-MMP16 Antibody - Protocols

Provided below are standard protocols that you may find useful for product applications.

- [Western Blot](#)
- [Blocking Peptides](#)
- [Dot Blot](#)
- [Immunohistochemistry](#)
- [Immunofluorescence](#)
- [Immunoprecipitation](#)
- [Flow Cytometry](#)
- [Cell Culture](#)

Anti-MMP16 Antibody - Images



Western blot analysis of MMP16 expression in U87MG (A), MCF7 (B), BV2 (C) whole cell lysates.

Anti-MMP16 Antibody - Background

KLH-conjugated synthetic peptide encompassing a sequence within the C-term region of human MMP16. The exact sequence is proprietary.