

Anti-Galectin 8 Antibody
Rabbit polyclonal antibody to Galectin 8
Catalog # AP60021

Specification

Anti-Galectin 8 Antibody - Product Information

Application	WB, IF
Primary Accession	O00214
Other Accession	O9JL15
Reactivity	Human, Mouse
Host	Rabbit
Clonality	Polyclonal
Calculated MW	35808

Anti-Galectin 8 Antibody - Additional Information

Gene ID 3964

Other Names

Galectin-8; Gal-8; Po66 carbohydrate-binding protein; Po66-CBP; Prostate carcinoma tumor antigen 1; PCTA-1

Target/Specificity

Recognizes endogenous levels of Galectin 8 protein.

Dilution

WB~~WB (1/500 - 1/1000), IH (1/100 - 1/200), IF/IC (1/100 - 1/500)
IF~~WB (1/500 - 1/1000), IH (1/100 - 1/200), IF/IC (1/100 - 1/500)

Format

Liquid in 0.42% Potassium phosphate, 0.87% Sodium chloride, pH 7.3, 30% glycerol, and 0.09% (W/V) sodium azide.

Storage

Store at -20 °C. Stable for 12 months from date of receipt

Anti-Galectin 8 Antibody - Protein Information

Name LGALS8 ([HGNC:6569](#))

Function

Beta-galactoside-binding lectin that acts as a sensor of membrane damage caused by infection and restricts the proliferation of infecting pathogens by targeting them for autophagy (PubMed: [22246324](http://www.uniprot.org/citations/22246324)), PubMed: [28077878](http://www.uniprot.org/citations/28077878)). Detects membrane rupture by binding beta-galactoside ligands located on the luminal side of the endosome membrane; these ligands becoming exposed to the cytoplasm following rupture (PubMed: [22246324](http://www.uniprot.org/citations/22246324)),

PubMed:28077878). Restricts infection by initiating autophagy via interaction with CALCOCO2/NDP52 (PubMed:22246324, PubMed:28077878). Required to restrict infection of bacterial invasion such as *S.typhimurium* (PubMed:22246324). Also required to restrict infection of Picornaviridae viruses (PubMed:28077878). Has a marked preference for 3'-O-sialylated and 3'-O-sulfated glycans (PubMed:21288902).

Cellular Location

Cytoplasmic vesicle. Cytoplasm, cytosol

Tissue Location

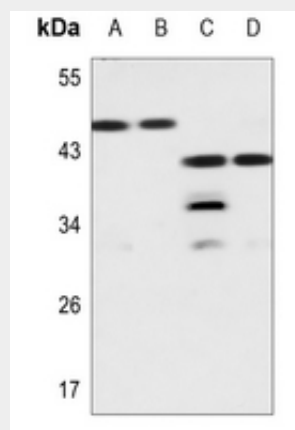
Ubiquitous. Selective expression by prostate carcinomas versus normal prostate and benign prostatic hypertrophy

Anti-Galectin 8 Antibody - Protocols

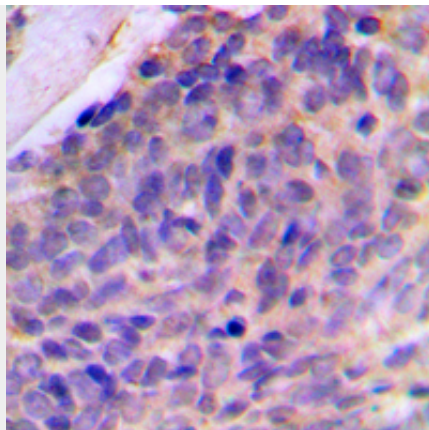
Provided below are standard protocols that you may find useful for product applications.

- [Western Blot](#)
- [Blocking Peptides](#)
- [Dot Blot](#)
- [Immunohistochemistry](#)
- [Immunofluorescence](#)
- [Immunoprecipitation](#)
- [Flow Cytometry](#)
- [Cell Culture](#)

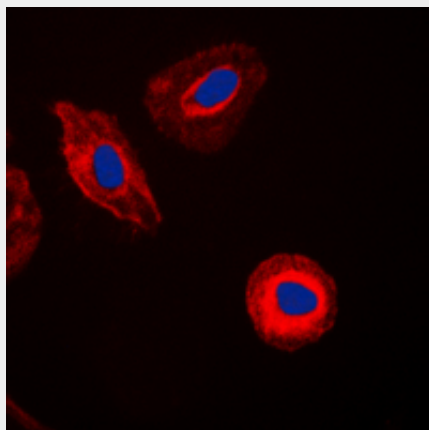
Anti-Galectin 8 Antibody - Images



Western blot analysis of Galectin 8 expression in HEK293T (A), U2OS (B), mouse kidney (C), mouse testis (D) whole cell lysates.



Immunohistochemical analysis of Galectin 8 staining in human breast cancer formalin fixed paraffin embedded tissue section. The section was pre-treated using heat mediated antigen retrieval with sodium citrate buffer (pH 6.0). The section was then incubated with the antibody at room temperature and detected using an HRP conjugated compact polymer system. DAB was used as the chromogen. The section was then counterstained with haematoxylin and mounted with DPX.



Immunofluorescent analysis of Galectin 8 staining in HepG2 cells. Formalin-fixed cells were permeabilized with 0.1% Triton X-100 in TBS for 5-10 minutes and blocked with 3% BSA-PBS for 30 minutes at room temperature. Cells were probed with the primary antibody in 3% BSA-PBS and incubated overnight at 4 °C in a humidified chamber. Cells were washed with PBST and incubated with a DyLight 594-conjugated secondary antibody (red) in PBS at room temperature in the dark. DAPI was used to stain the cell nuclei (blue).

Anti-Galectin 8 Antibody - Background

KLH-conjugated synthetic peptide encompassing a sequence within the center region of human Galectin 8. The exact sequence is proprietary.