

**Anti-Cytokeratin 18 (pS33) Antibody**  
Rabbit polyclonal antibody to Cytokeratin 18 (pS33)  
Catalog # AP60020

**Specification**

---

**Anti-Cytokeratin 18 (pS33) Antibody - Product Information**

Application	WB, IF
Primary Accession	<a href="#">P05783</a>
Other Accession	<a href="#">P05784</a>
Reactivity	Human, Mouse, Rat
Host	Rabbit
Clonality	Polyclonal
Calculated MW	48058

**Anti-Cytokeratin 18 (pS33) Antibody - Additional Information**

**Gene ID** 3875

**Other Names**

CYK18; Keratin, type I cytoskeletal 18; Cell proliferation-inducing gene 46 protein; Cytokeratin-18; CK-18; Keratin-18; K18

**Target/Specificity**

Recognizes endogenous levels of Cytokeratin 18 (pS33) protein.

**Dilution**

WB~~WB (1/500 - 1/1000), IH (1/100 - 1/200), IF/IC (1/100 - 1/500)  
IF~~WB (1/500 - 1/1000), IH (1/100 - 1/200), IF/IC (1/100 - 1/500)

**Format**

Liquid in 0.42% Potassium phosphate, 0.87% Sodium chloride, pH 7.3, 30% glycerol, and 0.09% (W/V) sodium azide.

**Storage**

Store at -20 °C. Stable for 12 months from date of receipt

**Anti-Cytokeratin 18 (pS33) Antibody - Protein Information**

**Name** KRT18

**Synonyms** CYK18

**Function**

Involved in the uptake of thrombin-antithrombin complexes by hepatic cells (By similarity). When phosphorylated, plays a role in filament reorganization. Involved in the delivery of mutated CFTR to the plasma membrane. Together with KRT8, is involved in interleukin-6 (IL-6)-mediated barrier protection.

**Cellular Location**

Nucleus matrix {ECO:0000250|UniProtKB:Q5BJY9}. Cytoplasm, perinuclear region. Nucleus, nucleolus. Cytoplasm {ECO:0000250|UniProtKB:Q5BJY9}

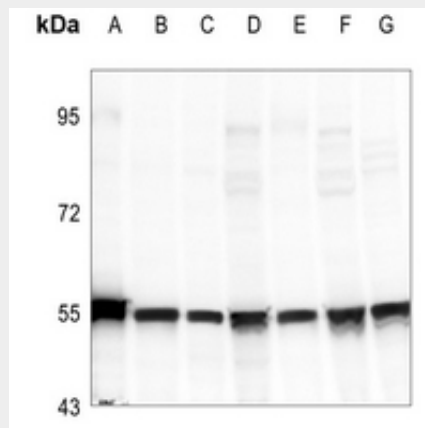
**Tissue Location**

Expressed in colon, placenta, liver and very weakly in exocervix. Increased expression observed in lymph nodes of breast carcinoma.

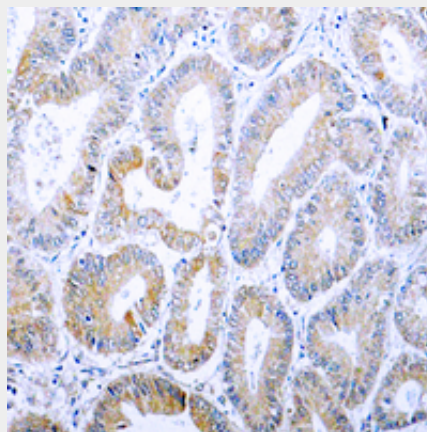
**Anti-Cytokeratin 18 (pS33) Antibody - Protocols**

Provided below are standard protocols that you may find useful for product applications.

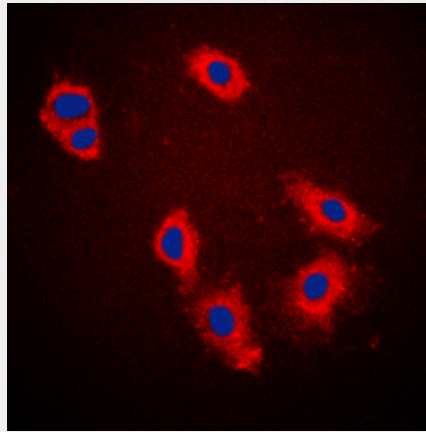
- [Western Blot](#)
- [Blocking Peptides](#)
- [Dot Blot](#)
- [Immunohistochemistry](#)
- [Immunofluorescence](#)
- [Immunoprecipitation](#)
- [Flow Cytometry](#)
- [Cell Culture](#)

**Anti-Cytokeratin 18 (pS33) Antibody - Images**

Western blot analysis of Cytokeratin 18 (pS33) expression in HCT116 (A), LO2 (B), MCF7 (C), A549 (D), SGC7901 (E), CT26 (F), C6 (G) whole cell lysates.



Immunohistochemical analysis of Cytokeratin 18 (pS33) staining in human colon cancer formalin fixed paraffin embedded tissue section. The section was pre-treated using heat mediated antigen retrieval with sodium citrate buffer (pH 6.0). The section was then incubated with the antibody at room temperature and detected using an HRP conjugated compact polymer system. DAB was used as the chromogen. The section was then counterstained with haematoxylin and mounted with DPX.



Immunofluorescent analysis of Cytokeratin 18 (pS33) staining in A431 cells. Formalin-fixed cells were permeabilized with 0.1% Triton X-100 in TBS for 5-10 minutes and blocked with 3% BSA-PBS for 30 minutes at room temperature. Cells were probed with the primary antibody in 3% BSA-PBS and incubated overnight at 4 °C in a humidified chamber. Cells were washed with PBST and incubated with a DyLight 594-conjugated secondary antibody (red) in PBS at room temperature in the dark. DAPI was used to stain the cell nuclei (blue).

#### **Anti-Cytokeratin 18 (pS33) Antibody - Background**

KLH-conjugated synthetic peptide encompassing a sequence within the N-term region of human Cytokeratin 18 (pS33). The exact sequence is proprietary.