

**Anti-HSP90 beta (pS254) Antibody**  
Rabbit polyclonal antibody to HSP90 beta (pS254)  
Catalog # AP60016

### Specification

---

#### Anti-HSP90 beta (pS254) Antibody - Product Information

Application	WB, IF
Primary Accession	<a href="#">P08238</a>
Other Accession	<a href="#">P11499</a>
Reactivity	Human, Mouse, Rat, Monkey
Host	Rabbit
Clonality	Polyclonal
Calculated MW	83264

#### Anti-HSP90 beta (pS254) Antibody - Additional Information

Gene ID 3326

#### Other Names

HSP90B; HSPC2; HSPCB; Heat shock protein HSP 90-beta; HSP 90; Heat shock 84 kDa; HSP 84; HSP84

#### Target/Specificity

Recognizes endogenous levels of HSP90 beta (pS254) protein.

#### Dilution

WB~~WB (1/500 - 1/1000), IH (1/100 - 1/200), IF/IC (1/100 - 1/500), IP (1/10 - 1/100)  
IF~~WB (1/500 - 1/1000), IH (1/100 - 1/200), IF/IC (1/100 - 1/500), IP (1/10 - 1/100)

#### Format

Liquid in 0.42% Potassium phosphate, 0.87% Sodium chloride, pH 7.3, 30% glycerol, and 0.09% (W/V) sodium azide.

#### Storage

Store at -20 °C. Stable for 12 months from date of receipt

#### Anti-HSP90 beta (pS254) Antibody - Protein Information

Name HSP90AB1 ([HGNC:5258](#))

#### Function

Molecular chaperone that promotes the maturation, structural maintenance and proper regulation of specific target proteins involved for instance in cell cycle control and signal transduction. Undergoes a functional cycle linked to its ATPase activity. This cycle probably induces conformational changes in the client proteins, thereby causing their activation. Interacts dynamically with various co-chaperones that modulate its substrate recognition, ATPase cycle and chaperone function (PubMed:<a href="http://www.uniprot.org/citations/16478993" target="\_blank">16478993</a>, PubMed:<a href="http://www.uniprot.org/citations/19696785" target="\_blank">19696785</a>)

target="\_blank">19696785</a>). Engages with a range of client protein classes via its interaction with various co-chaperone proteins or complexes, that act as adapters, simultaneously able to interact with the specific client and the central chaperone itself. Recruitment of ATP and co-chaperone followed by client protein forms a functional chaperone. After the completion of the chaperoning process, properly folded client protein and co-chaperone leave HSP90 in an ADP-bound partially open conformation and finally, ADP is released from HSP90 which acquires an open conformation for the next cycle (PubMed:<a href="http://www.uniprot.org/citations/26991466" target="\_blank">26991466</a>, PubMed:<a href="http://www.uniprot.org/citations/27295069" target="\_blank">27295069</a>). Apart from its chaperone activity, it also plays a role in the regulation of the transcription machinery. HSP90 and its co-chaperones modulate transcription at least at three different levels. They first alter the steady-state levels of certain transcription factors in response to various physiological cues. Second, they modulate the activity of certain epigenetic modifiers, such as histone deacetylases or DNA methyl transferases, and thereby respond to the change in the environment. Third, they participate in the eviction of histones from the promoter region of certain genes and thereby turn on gene expression (PubMed:<a href="http://www.uniprot.org/citations/25973397" target="\_blank">25973397</a>). Antagonizes STUB1- mediated inhibition of TGF-beta signaling via inhibition of STUB1- mediated SMAD3 ubiquitination and degradation (PubMed:<a href="http://www.uniprot.org/citations/24613385" target="\_blank">24613385</a>). Promotes cell differentiation by chaperoning BIRC2 and thereby protecting from auto-ubiquitination and degradation by the proteasomal machinery (PubMed:<a href="http://www.uniprot.org/citations/18239673" target="\_blank">18239673</a>). Main chaperone involved in the phosphorylation/activation of the STAT1 by chaperoning both JAK2 and PRKCE under heat shock and in turn, activates its own transcription (PubMed:<a href="http://www.uniprot.org/citations/20353823" target="\_blank">20353823</a>). Involved in the translocation into ERGIC (endoplasmic reticulum-Golgi intermediate compartment) of leaderless cargos (lacking the secretion signal sequence) such as the interleukin 1/IL-1; the translocation process is mediated by the cargo receptor TMED10 (PubMed:<a href="http://www.uniprot.org/citations/32272059" target="\_blank">32272059</a>).

#### Cellular Location

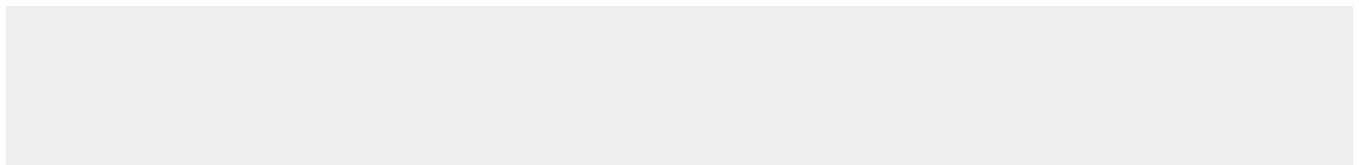
Cytoplasm. Melanosome Nucleus. Secreted. Cell membrane. Dynein axonemal particle {ECO:0000250|UniProtKB:Q6AZV1}. Cell surface. Note=Identified by mass spectrometry in melanosome fractions from stage I to stage IV (PubMed:17081065) Translocates with BIRC2 from the nucleus to the cytoplasm during differentiation (PubMed:18239673). Secreted when associated with TGFB1 processed form (LAP) (PubMed:20599762).

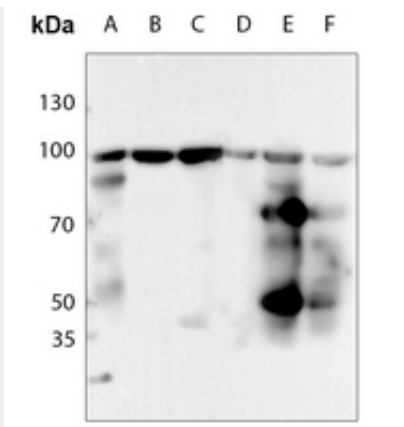
#### Anti-HSP90 beta (pS254) Antibody - Protocols

Provided below are standard protocols that you may find useful for product applications.

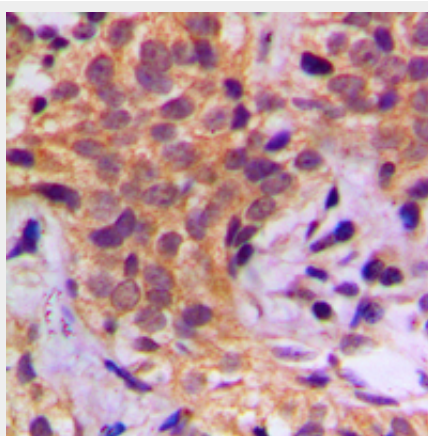
- [Western Blot](#)
- [Blocking Peptides](#)
- [Dot Blot](#)
- [Immunohistochemistry](#)
- [Immunofluorescence](#)
- [Immunoprecipitation](#)
- [Flow Cytometry](#)
- [Cell Culture](#)

#### Anti-HSP90 beta (pS254) Antibody - Images

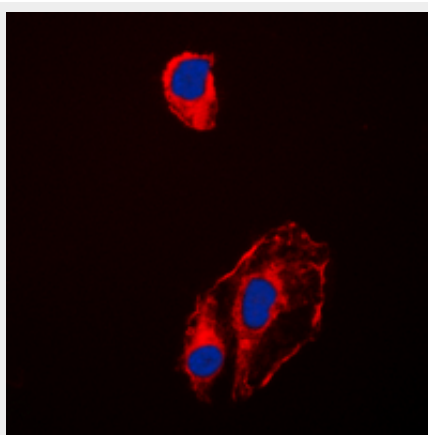




Western blot analysis of HSP90 beta (pS254) expression in HEK293T (A), HeLa (B), U2OS (C), mouse testis (D), rat lung (E), rat testis (F) whole cell lysates.



Immunohistochemical analysis of HSP90 beta (pS254) staining in human breast cancer formalin fixed paraffin embedded tissue section. The section was pre-treated using heat mediated antigen retrieval with sodium citrate buffer (pH 6.0). The section was then incubated with the antibody at room temperature and detected using an HRP conjugated compact polymer system. DAB was used as the chromogen. The section was then counterstained with haematoxylin and mounted with DPX.



Immunofluorescent analysis of HSP90 beta (pS254) staining in HeLa cells. Formalin-fixed cells were permeabilized with 0.1% Triton X-100 in TBS for 5-10 minutes and blocked with 3% BSA-PBS for 30 minutes at room temperature. Cells were probed with the primary antibody in 3% BSA-PBS and incubated overnight at 4 °C in a humidified chamber. Cells were washed with PBST and incubated with a DyLight 594-conjugated secondary antibody (red) in PBS at room temperature in

the dark. DAPI was used to stain the cell nuclei (blue).

#### **Anti-HSP90 beta (pS254) Antibody - Background**

KLH-conjugated synthetic peptide encompassing a sequence within the center region of human HSP90 beta (pS254). The exact sequence is proprietary.