

**Anti-Hexokinase 3 Antibody**  
**Rabbit polyclonal antibody to Hexokinase 3**  
**Catalog # AP60013****Specification**

---

**Anti-Hexokinase 3 Antibody - Product Information**

Application	<b>WB</b>
Primary Accession	<a href="#">P52790</a>
Reactivity	<b>Human, Mouse</b>
Host	<b>Rabbit</b>
Clonality	<b>Polyclonal</b>
Calculated MW	<b>99025</b>

**Anti-Hexokinase 3 Antibody - Additional Information****Gene ID** 3101**Other Names**

Hexokinase-3; Hexokinase type III; HK III

**Target/Specificity**

Recognizes endogenous levels of Hexokinase 3 protein.

**Dilution**

WB~~WB (1/500 - 1/1000), IH (1/100 - 1/200)

**Format**

Liquid in 0.42% Potassium phosphate, 0.87% Sodium chloride, pH 7.3, 30% glycerol, and 0.09% (W/V) sodium azide.

**Storage**

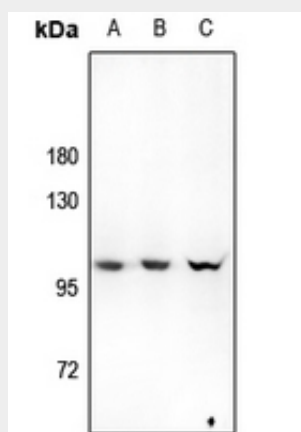
Store at -20 °C. Stable for 12 months from date of receipt

**Anti-Hexokinase 3 Antibody - Protein Information****Name** HK3 ([HGNC:4925](#))**Function**Catalyzes the phosphorylation of hexose, such as D-glucose and D-fructose, to hexose 6-phosphate (D-glucose 6-phosphate and D-fructose 6-phosphate, respectively) (PubMed: [8717435](http://www.uniprot.org/citations/8717435)). Mediates the initial step of glycolysis by catalyzing phosphorylation of D-glucose to D-glucose 6-phosphate (PubMed: [8717435](http://www.uniprot.org/citations/8717435)).**Anti-Hexokinase 3 Antibody - Protocols**

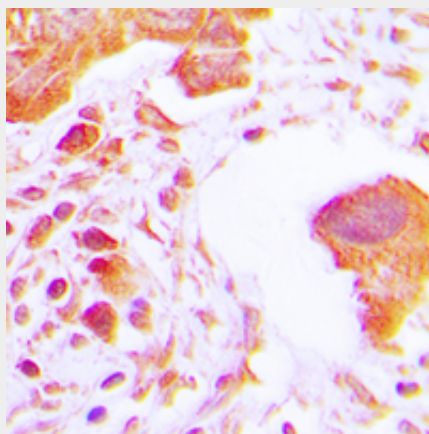
Provided below are standard protocols that you may find useful for product applications.

- [Western Blot](#)
- [Blocking Peptides](#)
- [Dot Blot](#)
- [Immunohistochemistry](#)
- [Immunofluorescence](#)
- [Immunoprecipitation](#)
- [Flow Cytometry](#)
- [Cell Culture](#)

### Anti-Hexokinase 3 Antibody - Images



Western blot analysis of Hexokinase 3 expression in LO2 (A), A549 (B), AML12 (C) whole cell lysates.



Immunohistochemical analysis of Hexokinase 3 staining in human lung cancer formalin fixed paraffin embedded tissue section. The section was pre-treated using heat mediated antigen retrieval with sodium citrate buffer (pH 6.0). The section was then incubated with the antibody at room temperature and detected using an HRP conjugated compact polymer system. DAB was used as the chromogen. The section was then counterstained with haematoxylin and mounted with DPX.

### Anti-Hexokinase 3 Antibody - Background

KLH-conjugated synthetic peptide encompassing a sequence within the C-term region of human Hexokinase 3. The exact sequence is proprietary.