

**Anti-HEXB Antibody**  
Rabbit polyclonal antibody to HEXB  
Catalog # AP60011

**Specification**

---

**Anti-HEXB Antibody - Product Information**

Application	<b>WB, IF</b>
Primary Accession	<a href="#">P07686</a>
Reactivity	<b>Human</b>
Host	<b>Rabbit</b>
Clonality	<b>Polyclonal</b>
Calculated MW	<b>63137</b>

**Anti-HEXB Antibody - Additional Information**

**Gene ID** 3074

**Other Names**

Beta-hexosaminidase subunit beta; Beta-N-acetylhexosaminidase subunit beta; Hexosaminidase subunit B; Cervical cancer proto-oncogene 7 protein; HCC-7; N-acetyl-beta-glucosaminidase subunit beta

**Target/Specificity**

Recognizes endogenous levels of HEXB protein.

**Dilution**

WB~~WB (1/500 - 1/1000), IH (1/100 - 1/200), IF/IC (1/100 - 1/500)  
IF~~WB (1/500 - 1/1000), IH (1/100 - 1/200), IF/IC (1/100 - 1/500)

**Format**

Liquid in 0.42% Potassium phosphate, 0.87% Sodium chloride, pH 7.3, 30% glycerol, and 0.09% (W/V) sodium azide.

**Storage**

Store at -20 °C. Stable for 12 months from date of receipt

**Anti-HEXB Antibody - Protein Information**

**Name** HEXB ([HGNC:4879](#))

**Function**

Hydrolyzes the non-reducing end N-acetyl-D-hexosamine and/or sulfated N-acetyl-D-hexosamine of glycoconjugates, such as the oligosaccharide moieties from proteins and neutral glycolipids, or from certain mucopolysaccharides (PubMed: <a href="http://www.uniprot.org/citations/11707436" target="\_blank">11707436</a>, PubMed: <a href="http://www.uniprot.org/citations/8123671" target="\_blank">8123671</a>, PubMed: <a href="http://www.uniprot.org/citations/8672428" target="\_blank">8672428</a>, PubMed: <a href="http://www.uniprot.org/citations/9694901" target="\_blank">9694901</a>). The isozyme B does not hydrolyze each of these substrates,

however hydrolyzes efficiently neutral oligosaccharide (PubMed:<a href="http://www.uniprot.org/citations/11707436" target="\_blank">11707436</a>). Only the isozyme A is responsible for the degradation of GM2 gangliosides in the presence of GM2A (PubMed:<a href="http://www.uniprot.org/citations/8123671" target="\_blank">8123671</a>, PubMed:<a href="http://www.uniprot.org/citations/8672428" target="\_blank">8672428</a>, PubMed:<a href="http://www.uniprot.org/citations/9694901" target="\_blank">9694901</a>). During fertilization is responsible, at least in part, for the zona block to polyspermy. Present in the cortical granules of non-activated oocytes, is exocytosed during the cortical reaction in response to oocyte activation and inactivates the sperm galactosyltransferase-binding site, accounting for the block in sperm binding to the zona pellucida (By similarity).

#### Cellular Location

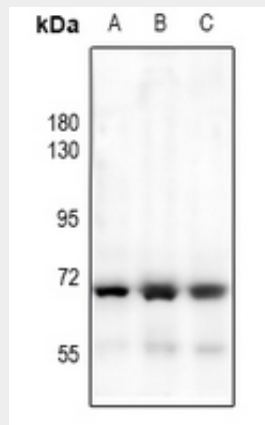
Lysosome. Cytoplasmic vesicle, secretory vesicle, Cortical granule  
{ECO:0000250|UniProtKB:P20060}

#### Anti-HEXB Antibody - Protocols

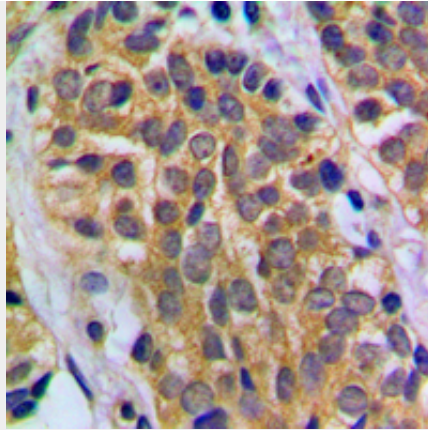
Provided below are standard protocols that you may find useful for product applications.

- [Western Blot](#)
- [Blocking Peptides](#)
- [Dot Blot](#)
- [Immunohistochemistry](#)
- [Immunofluorescence](#)
- [Immunoprecipitation](#)
- [Flow Cytometry](#)
- [Cell Culture](#)

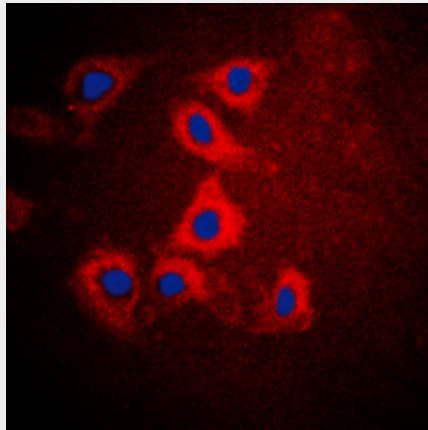
#### Anti-HEXB Antibody - Images



Western blot analysis of HEXB expression in HEK293T (A), A375 (B), LO2 (C) whole cell lysates.



Immunohistochemical analysis of HEXB staining in human prostate cancer formalin fixed paraffin embedded tissue section. The section was pre-treated using heat mediated antigen retrieval with sodium citrate buffer (pH 6.0). The section was then incubated with the antibody at room temperature and detected using an HRP conjugated compact polymer system. DAB was used as the chromogen. The section was then counterstained with haematoxylin and mounted with DPX.



Immunofluorescent analysis of HEXB staining in HepG2 cells. Formalin-fixed cells were permeabilized with 0.1% Triton X-100 in TBS for 5-10 minutes and blocked with 3% BSA-PBS for 30 minutes at room temperature. Cells were probed with the primary antibody in 3% BSA-PBS and incubated overnight at 4 °C in a humidified chamber. Cells were washed with PBST and incubated with a DyLight 594-conjugated secondary antibody (red) in PBS at room temperature in the dark. DAPI was used to stain the cell nuclei (blue).

#### **Anti-HEXB Antibody - Background**

KLH-conjugated synthetic peptide encompassing a sequence within the C-term region of human HEXB. The exact sequence is proprietary.