

Anti-ATF6B Antibody
Rabbit polyclonal antibody to ATF6B
Catalog # AP59990**Specification**

Anti-ATF6B Antibody - Product Information

Application	WB
Primary Accession	O99941
Other Accession	O35451
Reactivity	Human, Mouse, Rat
Host	Rabbit
Clonality	Polyclonal
Calculated MW	76709

Anti-ATF6B Antibody - Additional Information**Gene ID** 1388**Other Names**

CREBL1; G13; Cyclic AMP-dependent transcription factor ATF-6 beta; cAMP-dependent transcription factor ATF-6 beta; Activating transcription factor 6 beta; ATF6-beta; Protein G13; cAMP response element-binding protein-related protein; Creb-rp; cAMP-responsive element-binding protein-like 1

Target/Specificity

Recognizes endogenous levels of ATF6B protein.

Dilution

WB~~WB (1/500 - 1/1000)

Format

Liquid in 0.42% Potassium phosphate, 0.87% Sodium chloride, pH 7.3, 30% glycerol, and 0.09% (W/V) sodium azide.

Storage

Store at -20 °C. Stable for 12 months from date of receipt

Anti-ATF6B Antibody - Protein Information**Name** ATF6B**Synonyms** CREBL1, G13**Function**

[Cyclic AMP-dependent transcription factor ATF-6 beta]: Precursor of the transcription factor form (Processed cyclic AMP- dependent transcription factor ATF-6 beta), which is embedded in the endoplasmic reticulum membrane (PubMed:11256944). Endoplasmic reticulum stress promotes processing of this form,

releasing the transcription factor form that translocates into the nucleus, where it activates transcription of genes involved in the unfolded protein response (UPR) (PubMed:11256944).

Cellular Location

Endoplasmic reticulum membrane; Single-pass type II membrane protein

Tissue Location

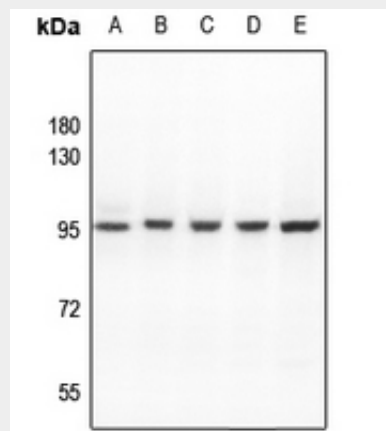
Ubiquitous..

Anti-ATF6B Antibody - Protocols

Provided below are standard protocols that you may find useful for product applications.

- [Western Blot](#)
- [Blocking Peptides](#)
- [Dot Blot](#)
- [Immunohistochemistry](#)
- [Immunofluorescence](#)
- [Immunoprecipitation](#)
- [Flow Cytometry](#)
- [Cell Culture](#)

Anti-ATF6B Antibody - Images



Western blot analysis of ATF6B expression in mouse embryo (A), C6 (B), CT26 (C), DLD (D), A2780 (E) whole cell lysates.

Anti-ATF6B Antibody - Background

KLH-conjugated synthetic peptide encompassing a sequence within the center region of human ATF6B. The exact sequence is proprietary.