

Anti-CKMT2 Antibody
Rabbit polyclonal antibody to CKMT2
Catalog # AP59987

Specification

Anti-CKMT2 Antibody - Product Information

Application	WB, IF
Primary Accession	P17540
Other Accession	Q6P8J7
Reactivity	Human, Mouse, Rat, Pig, Chicken, Bovine, Dog
Host	Rabbit
Clonality	Polyclonal
Calculated MW	47504

Anti-CKMT2 Antibody - Additional Information

Gene ID 1160

Other Names

Creatine kinase S-type mitochondrial; Basic-type mitochondrial creatine kinase; Mib-CK; Sarcomeric mitochondrial creatine kinase; S-MtCK

Target/Specificity

Recognizes endogenous levels of CKMT2 protein.

Dilution

WB~~WB (1/500 - 1/1000), IH (1/100 - 1/200), IF/IC (1/100 - 1/500)
IF~~WB (1/500 - 1/1000), IH (1/100 - 1/200), IF/IC (1/100 - 1/500)

Format

Liquid in 0.42% Potassium phosphate, 0.87% Sodium chloride, pH 7.3, 30% glycerol, and 0.09% (W/V) sodium azide.

Storage

Store at -20 °C. Stable for 12 months from date of receipt

Anti-CKMT2 Antibody - Protein Information

Name CKMT2

Function

Reversibly catalyzes the transfer of phosphate between ATP and various phosphogens (e.g. creatine phosphate). Creatine kinase isoenzymes play a central role in energy transduction in tissues with large, fluctuating energy demands, such as skeletal muscle, heart, brain and spermatozoa.

Cellular Location

Mitochondrion inner membrane; Peripheral membrane protein; Intermembrane side

Tissue Location

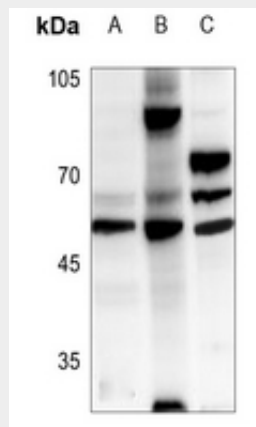
Sarcomere-specific. Found only in heart and skeletal muscles

Anti-CKMT2 Antibody - Protocols

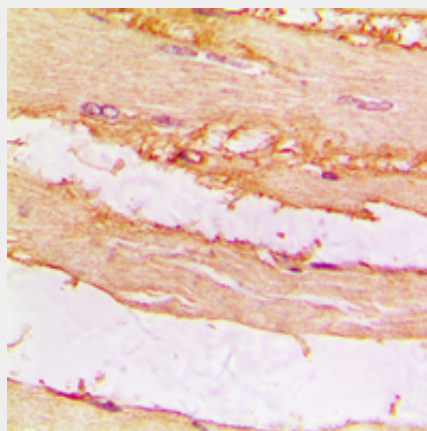
Provided below are standard protocols that you may find useful for product applications.

- [Western Blot](#)
- [Blocking Peptides](#)
- [Dot Blot](#)
- [Immunohistochemistry](#)
- [Immunofluorescence](#)
- [Immunoprecipitation](#)
- [Flow Cytometry](#)
- [Cell Culture](#)

Anti-CKMT2 Antibody - Images

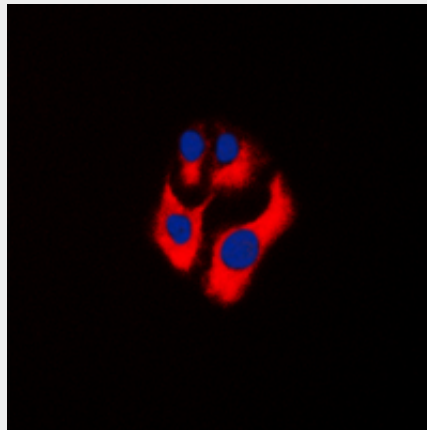


Western blot analysis of CKMT2 expression in mouse heart (A), rat kidney (B), rat heart (C) whole cell lysates.



Immunohistochemical analysis of CKMT2 staining in human muscle formalin fixed paraffin embedded tissue section. The section was pre-treated using heat mediated antigen retrieval with sodium citrate buffer (pH 6.0). The section was then incubated with the antibody at room

temperature and detected using an HRP conjugated compact polymer system. DAB was used as the chromogen. The section was then counterstained with haematoxylin and mounted with DPX.



Immunofluorescent analysis of CKMT2 staining in THP1 cells. Formalin-fixed cells were permeabilized with 0.1% Triton X-100 in TBS for 5-10 minutes and blocked with 3% BSA-PBS for 30 minutes at room temperature. Cells were probed with the primary antibody in 3% BSA-PBS and incubated overnight at 4 °C in a humidified chamber. Cells were washed with PBST and incubated with a DyLight 594-conjugated secondary antibody (red) in PBS at room temperature in the dark. DAPI was used to stain the cell nuclei (blue).

Anti-CKMT2 Antibody - Background

KLH-conjugated synthetic peptide encompassing a sequence within the center region of human CKMT2. The exact sequence is proprietary.