

**Anti-LI Cadherin Antibody**  
Rabbit polyclonal antibody to LI Cadherin  
Catalog # AP59985

**Specification**

---

**Anti-LI Cadherin Antibody - Product Information**

Application	WB
Primary Accession	<a href="#">Q12864</a>
Reactivity	Human
Host	Rabbit
Clonality	Polyclonal
Calculated MW	92219

**Anti-LI Cadherin Antibody - Additional Information**

**Gene ID** 1015

**Other Names**

Cadherin-17; Intestinal peptide-associated transporter HPT-1; Liver-intestine cadherin; LI-cadherin

**Target/Specificity**

Recognizes endogenous levels of LI Cadherin protein.

**Dilution**

WB~~WB (1/500 - 1/1000), IH (1/100 - 1/200)

**Format**

Liquid in 0.42% Potassium phosphate, 0.87% Sodium chloride, pH 7.3, 30% glycerol, and 0.09% (W/V) sodium azide.

**Storage**

Store at -20 °C. Stable for 12 months from date of receipt

**Anti-LI Cadherin Antibody - Protein Information**

**Name** CDH17

**Function**

Cadherins are calcium-dependent cell adhesion proteins. They preferentially interact with themselves in a homophilic manner in connecting cells; cadherins may thus contribute to the sorting of heterogeneous cell types. LI-cadherin may have a role in the morphological organization of liver and intestine. Involved in intestinal peptide transport.

**Cellular Location**

Cell membrane; Single-pass type I membrane protein

**Tissue Location**

Expressed in the gastrointestinal tract and pancreatic duct. Not detected in kidney, lung, liver,

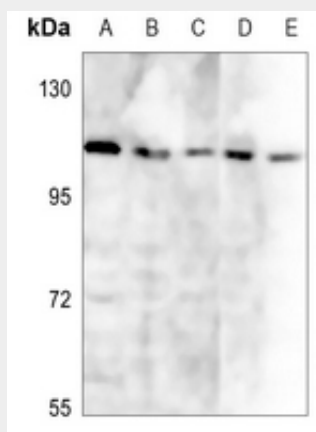
brain, adrenal gland and skin.

### Anti-LI Cadherin Antibody - Protocols

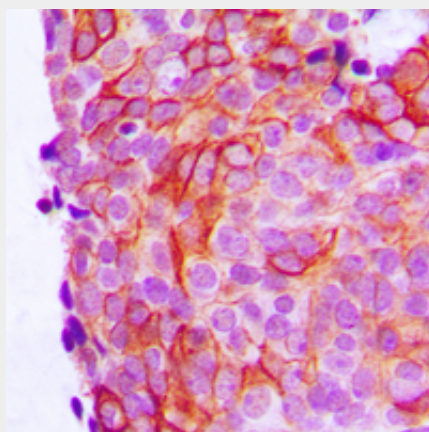
Provided below are standard protocols that you may find useful for product applications.

- [Western Blot](#)
- [Blocking Peptides](#)
- [Dot Blot](#)
- [Immunohistochemistry](#)
- [Immunofluorescence](#)
- [Immunoprecipitation](#)
- [Flow Cytometry](#)
- [Cell Culture](#)

### Anti-LI Cadherin Antibody - Images



Western blot analysis of LI Cadherin expression in HeLa (A), DLD (B), A375 (C), H446 (D), A549 (E) whole cell lysates.



Immunohistochemical analysis of LI Cadherin staining in human breast cancer formalin fixed paraffin embedded tissue section. The section was pre-treated using heat mediated antigen retrieval with sodium citrate buffer (pH 6.0). The section was then incubated with the antibody at room temperature and detected using an HRP conjugated compact polymer system. DAB was used as the chromogen. The section was then counterstained with haematoxylin and mounted with DPX.

**Anti-LI Cadherin Antibody - Background**

KLH-conjugated synthetic peptide encompassing a sequence within the center region of human LI Cadherin. The exact sequence is proprietary.