

**Anti-CDC25C Antibody**  
Rabbit polyclonal antibody to CDC25C  
Catalog # AP59983**Specification**

---

**Anti-CDC25C Antibody - Product Information**

Application	<b>WB, IF</b>
Primary Accession	<a href="#">P30307</a>
Other Accession	<a href="#">P48967</a>
Reactivity	<b>Human, Mouse, Rat</b>
Host	<b>Rabbit</b>
Clonality	<b>Polyclonal</b>
Calculated MW	<b>53365</b>

**Anti-CDC25C Antibody - Additional Information****Gene ID** 995**Other Names**

M-phase inducer phosphatase 3; Dual specificity phosphatase Cdc25C

**Target/Specificity**

Recognizes endogenous levels of CDC25C protein.

**Dilution**

WB~~WB (1/500 - 1/1000), IH (1/100 - 1/200), IF/IC (1/100 - 1/500)

IF~~WB (1/500 - 1/1000), IH (1/100 - 1/200), IF/IC (1/100 - 1/500)

**Format**

Liquid in 0.42% Potassium phosphate, 0.87% Sodium chloride, pH 7.3, 30% glycerol, and 0.09% (W/V) sodium azide.

**Storage**

Store at -20 °C. Stable for 12 months from date of receipt

**Anti-CDC25C Antibody - Protein Information****Name** CDC25C**Function**

Functions as a dosage-dependent inducer in mitotic control. Tyrosine protein phosphatase required for progression of the cell cycle (PubMed:<a href="http://www.uniprot.org/citations/8119945" target="\_blank">8119945</a>). When phosphorylated, highly effective in activating G2 cells into prophase (PubMed:<a href="http://www.uniprot.org/citations/8119945" target="\_blank">8119945</a>). Directly dephosphorylates CDK1 and activates its kinase activity (PubMed:<a href="http://www.uniprot.org/citations/8119945" target="\_blank">8119945</a>).

## Cellular Location

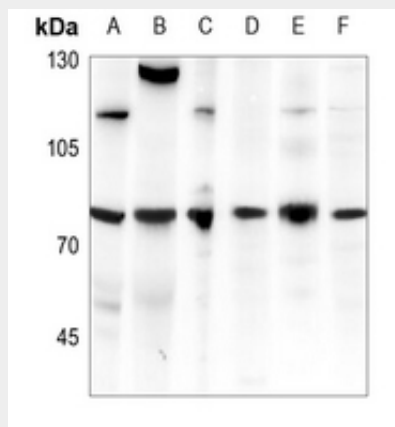
Nucleus

### Anti-CDC25C Antibody - Protocols

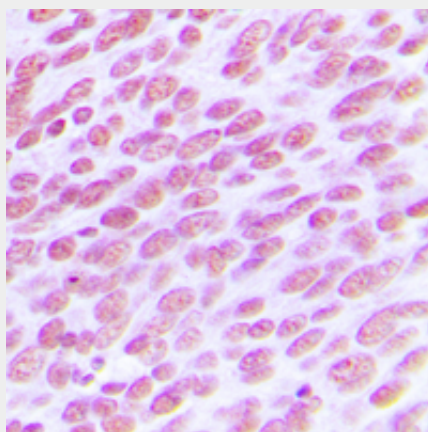
Provided below are standard protocols that you may find useful for product applications.

- [Western Blot](#)
- [Blocking Peptides](#)
- [Dot Blot](#)
- [Immunohistochemistry](#)
- [Immunofluorescence](#)
- [Immunoprecipitation](#)
- [Flow Cytometry](#)
- [Cell Culture](#)

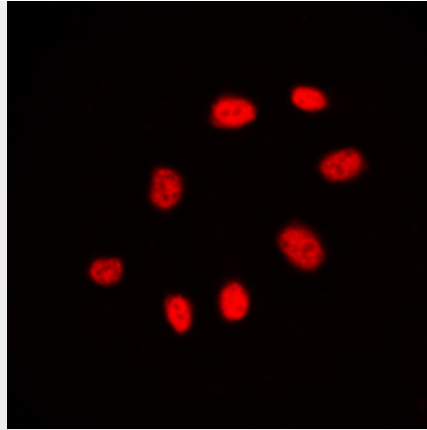
### Anti-CDC25C Antibody - Images



Western blot analysis of CDC25C expression in rat brain (A), mouse lung (B), CT26 (C), PC12 (D), U87MG (E), Hela (F) whole cell lysates.



Immunohistochemical analysis of CDC25C staining in human breast cancer formalin fixed paraffin embedded tissue section. The section was pre-treated using heat mediated antigen retrieval with sodium citrate buffer (pH 6.0). The section was then incubated with the antibody at room temperature and detected using an HRP conjugated compact polymer system. DAB was used as the chromogen. The section was then counterstained with haematoxylin and mounted with DPX.



Immunofluorescent analysis of CDC25C staining in A431 cells. Formalin-fixed cells were permeabilized with 0.1% Triton X-100 in TBS for 5-10 minutes and blocked with 3% BSA-PBS for 30 minutes at room temperature. Cells were probed with the primary antibody in 3% BSA-PBS and incubated overnight at 4 °C in a humidified chamber. Cells were washed with PBST and incubated with a DyLight 594-conjugated secondary antibody (red) in PBS at room temperature in the dark.

#### **Anti-CDC25C Antibody - Background**

KLH-conjugated synthetic peptide encompassing a sequence within the center region of human CDC25C. The exact sequence is proprietary.