

Anti-Cyclin E1 (pT395) Antibody
Rabbit polyclonal antibody to Cyclin E1 (pT395)
Catalog # AP59981

Specification

Anti-Cyclin E1 (pT395) Antibody - Product Information

Application	WB
Primary Accession	P24864
Other Accession	Q61457
Reactivity	Human, Mouse, Rat
Host	Rabbit
Clonality	Polyclonal
Calculated MW	47077

Anti-Cyclin E1 (pT395) Antibody - Additional Information

Gene ID 898

Other Names

CCNE; G1/S-specific cyclin-E1

Target/Specificity

Recognizes endogenous levels of Cyclin E1 (pT395) protein.

Dilution

WB~~WB (1/500 - 1/1000), IH (1/100 - 1/200)

Format

Liquid in 0.42% Potassium phosphate, 0.87% Sodium chloride, pH 7.3, 30% glycerol, and 0.09% (W/V) sodium azide.

Storage

Store at -20 °C. Stable for 12 months from date of receipt

Anti-Cyclin E1 (pT395) Antibody - Protein Information

Name CCNE1

Synonyms CCNE

Function

Essential for the control of the cell cycle at the G1/S (start) transition.

Cellular Location

Nucleus.

Tissue Location

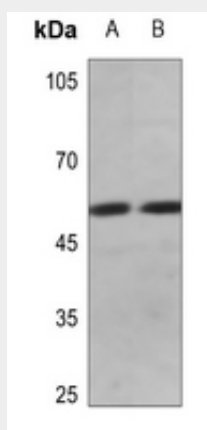
Highly expressed in testis and placenta. Low levels in bronchial epithelial cells.

Anti-Cyclin E1 (pT395) Antibody - Protocols

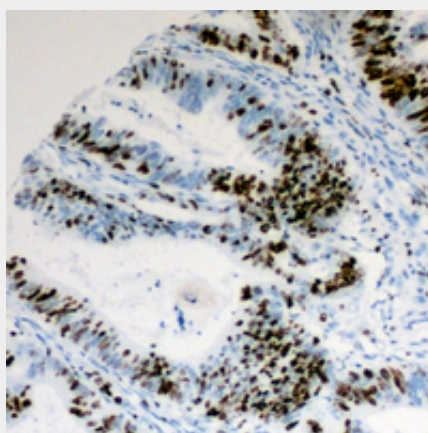
Provided below are standard protocols that you may find useful for product applications.

- [Western Blot](#)
- [Blocking Peptides](#)
- [Dot Blot](#)
- [Immunohistochemistry](#)
- [Immunofluorescence](#)
- [Immunoprecipitation](#)
- [Flow Cytometry](#)
- [Cell Culture](#)

Anti-Cyclin E1 (pT395) Antibody - Images



Western blot analysis of Cyclin E1 (pT395) expression in mouse kidney (A), rat kidney (B) whole cell lysates.



Immunohistochemical analysis of Cyclin E1 (pT395) staining in human colon cancer formalin fixed paraffin embedded tissue section. The section was pre-treated using heat mediated antigen retrieval with sodium citrate buffer (pH 6.0). The section was then incubated with the antibody at room temperature and detected using an HRP conjugated compact polymer system. DAB was used as the chromogen. The section was then counterstained with haematoxylin and mounted with DPX.

Anti-Cyclin E1 (pT395) Antibody - Background

KLH-conjugated synthetic peptide encompassing a sequence within the C-term region of human Cyclin E1 (pT395). The exact sequence is proprietary.