

Anti-Catalase (pY386) Antibody
Rabbit polyclonal antibody to Catalase (pY386)
Catalog # AP59978

Specification

Anti-Catalase (pY386) Antibody - Product Information

Application	WB, E
Primary Accession	P04040
Other Accession	P24270
Reactivity	Human, Mouse, Rat, Zebrafish, Bovine, Dog
Host	Rabbit
Clonality	Polyclonal
Calculated MW	59756

Anti-Catalase (pY386) Antibody - Additional Information

Gene ID 847

Other Names
Catalase

Target/Specificity
Recognizes endogenous levels of Catalase (pY386) protein.

Dilution
WB~~WB (1/500 - 1/1000), IH (1/100 - 1/200)
E~~WB (1/500 - 1/1000), IH (1/100 - 1/200)

Format
Liquid in 0.42% Potassium phosphate, 0.87% Sodium chloride, pH 7.3, 30% glycerol, and 0.09% (W/V) sodium azide.

Storage
Store at -20 °C. Stable for 12 months from date of receipt

Anti-Catalase (pY386) Antibody - Protein Information

Name CAT

Function
Catalyzes the degradation of hydrogen peroxide (H₂O₂) generated by peroxisomal oxidases to water and oxygen, thereby protecting cells from the toxic effects of hydrogen peroxide (PubMed:[7882369](http://www.uniprot.org/citations/7882369)). Promotes growth of cells including T-cells, B-cells, myeloid leukemia cells, melanoma cells, mastocytoma cells and normal and transformed fibroblast cells (PubMed:[7882369](http://www.uniprot.org/citations/7882369)).

Cellular Location

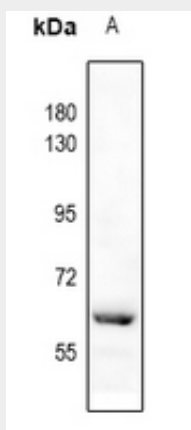
Peroxisome matrix

Anti-Catalase (pY386) Antibody - Protocols

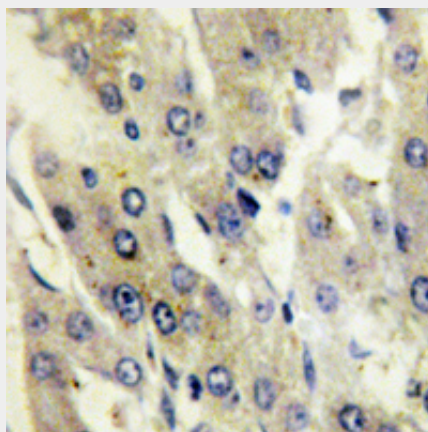
Provided below are standard protocols that you may find useful for product applications.

- [Western Blot](#)
- [Blocking Peptides](#)
- [Dot Blot](#)
- [Immunohistochemistry](#)
- [Immunofluorescence](#)
- [Immunoprecipitation](#)
- [Flow Cytometry](#)
- [Cell Culture](#)

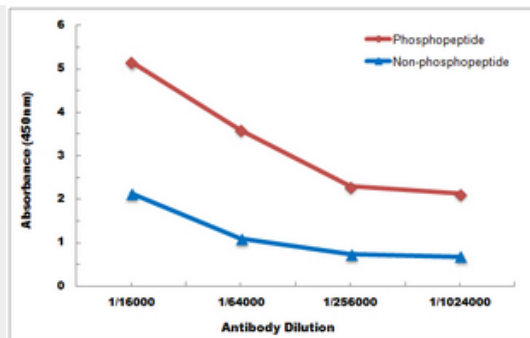
Anti-Catalase (pY386) Antibody - Images



Western blot analysis of Catalase (pY386) expression in AML12 (A) whole cell lysates.



Immunohistochemical analysis of Catalase (pY386) staining in human liver formalin fixed paraffin embedded tissue section. The section was pre-treated using heat mediated antigen retrieval with sodium citrate buffer (pH 6.0). The section was then incubated with the antibody at room temperature and detected using an HRP conjugated compact polymer system. DAB was used as the chromogen. The section was then counterstained with haematoxylin and mounted with DPX.



Direct ELISA antibody dose-response curve using Anti-Catalase (pY386) Antibody. Antigen (phosphopeptide and non-phosphopeptide) concentration is 5 ug/ml. Goat Anti-Rabbit IgG (H&L) - HRP was used as the secondary antibody, and signal was developed by TMB substrate.

Anti-Catalase (pY386) Antibody - Background

KLH-conjugated synthetic peptide encompassing a sequence within the center region of human Catalase (pY386). The exact sequence is proprietary.