

Anti-Annexin A2 (pS26) Antibody
Rabbit polyclonal antibody to Annexin A2 (pS26)
Catalog # AP59966

Specification

Anti-Annexin A2 (pS26) Antibody - Product Information

Application	WB
Primary Accession	P07355
Other Accession	P07356
Reactivity	Human, Mouse, Rat, Monkey, Bovine, SARS, Dog
Host	Rabbit
Clonality	Polyclonal
Calculated MW	38604

Anti-Annexin A2 (pS26) Antibody - Additional Information

Gene ID 302

Other Names

ANX2; ANX2L4; CAL1H; LPC2D; Annexin A2; Annexin II; Annexin-2; Calpactin I heavy chain; Calpactin-1 heavy chain; Chromobindin-8; Lipocortin II; Placental anticoagulant protein IV; PAP-IV; Protein I; p36

Target/Specificity

Recognizes endogenous levels of Annexin A2 (pS26) protein.

Dilution

WB~~WB (1/500 - 1/1000), IP (1/10 - 1/100)

Format

Liquid in 0.42% Potassium phosphate, 0.87% Sodium chloride, pH 7.3, 30% glycerol, and 0.09% (W/V) sodium azide.

Storage

Store at -20 °C. Stable for 12 months from date of receipt

Anti-Annexin A2 (pS26) Antibody - Protein Information

Name ANXA2

Synonyms ANX2, ANX2L4, CAL1H, LPC2D

Function

Calcium-regulated membrane-binding protein whose affinity for calcium is greatly enhanced by anionic phospholipids. It binds two calcium ions with high affinity. May be involved in heat-stress response. Inhibits PCSK9-enhanced LDLR degradation, probably reduces PCSK9 protein levels via a translational mechanism but also competes with LDLR for binding with PCSK9 (PubMed:18799458, PubMed:22848640, PubMed:24808179).

Cellular Location

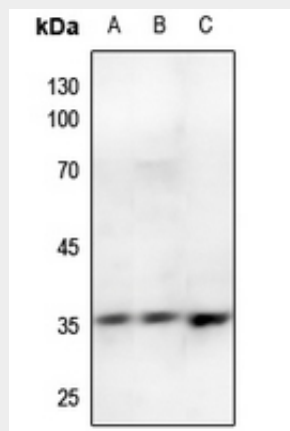
Secreted, extracellular space, extracellular matrix, basement membrane. Melanosome. Note=In the lamina beneath the plasma membrane. Identified by mass spectrometry in melanosome fractions from stage I to stage IV. Translocated from the cytoplasm to the cell surface through a Golgi-independent mechanism

Anti-Annexin A2 (pS26) Antibody - Protocols

Provided below are standard protocols that you may find useful for product applications.

- [Western Blot](#)
- [Blocking Peptides](#)
- [Dot Blot](#)
- [Immunohistochemistry](#)
- [Immunofluorescence](#)
- [Immunoprecipitation](#)
- [Flow Cytometry](#)
- [Cell Culture](#)

Anti-Annexin A2 (pS26) Antibody - Images



Western blot analysis of Annexin A2 (pS26) expression in mouse lung (A), rat lung (B), rat liver (C) whole cell lysates.

Anti-Annexin A2 (pS26) Antibody - Background

KLH-conjugated synthetic peptide encompassing a sequence within the N-term region of human Annexin A2 (pS26). The exact sequence is proprietary.