

**Anti-Adrenomedullin Antibody**  
Rabbit polyclonal antibody to Adrenomedullin  
Catalog # AP59960

**Specification**

---

**Anti-Adrenomedullin Antibody - Product Information**

Application	WB
Primary Accession	<a href="#">P35318</a>
Reactivity	Human, Mouse, Monkey
Host	Rabbit
Clonality	Polyclonal
Calculated MW	20420

**Anti-Adrenomedullin Antibody - Additional Information**

**Gene ID** 133

**Other Names**  
AM; ADM

**Target/Specificity**  
Recognizes endogenous levels of Adrenomedullin protein.

**Dilution**  
WB~~WB (1/500 - 1/1000), IP (1/10 - 1/100)

**Format**  
Liquid in 0.42% Potassium phosphate, 0.87% Sodium chloride, pH 7.3, 30% glycerol, and 0.09% (W/V) sodium azide.

**Storage**  
Store at -20 °C. Stable for 12 months from date of receipt

**Anti-Adrenomedullin Antibody - Protein Information**

**Name** ADM ([HGNC:259](#))

**Synonyms** AM

**Function**  
Adrenomedullin/ADM and proadrenomedullin N-20 terminal peptide/PAMP are peptide hormones that act as potent hypotensive and vasodilator agents (PubMed:<a href="http://www.uniprot.org/citations/8387282" target="\_blank">8387282</a>, PubMed:<a href="http://www.uniprot.org/citations/9620797" target="\_blank">9620797</a>). Numerous actions have been reported most related to the physiologic control of fluid and electrolyte homeostasis. In the kidney, ADM is diuretic and natriuretic, and both ADM and PAMP inhibit aldosterone secretion by direct adrenal actions. In pituitary gland, both peptides at physiologically relevant doses inhibit basal ACTH secretion. Both peptides appear to act in brain and pituitary

gland to facilitate the loss of plasma volume, actions which complement their hypotensive effects in blood vessels.

#### Cellular Location

Secreted.

#### Tissue Location

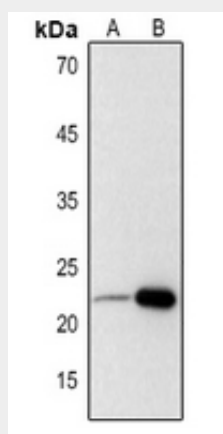
Highest levels found in pheochromocytoma and adrenal medulla. Also found in lung, ventricle and kidney tissues

### Anti-Adrenomedullin Antibody - Protocols

Provided below are standard protocols that you may find useful for product applications.

- [Western Blot](#)
- [Blocking Peptides](#)
- [Dot Blot](#)
- [Immunohistochemistry](#)
- [Immunofluorescence](#)
- [Immunoprecipitation](#)
- [Flow Cytometry](#)
- [Cell Culture](#)

### Anti-Adrenomedullin Antibody - Images



Western blot analysis of Adrenomedullin expression in mouse lung (A), mouse kidney (B) whole cell lysates.

### Anti-Adrenomedullin Antibody - Background

KLH-conjugated synthetic peptide encompassing a sequence within the center region of human Adrenomedullin. The exact sequence is proprietary.