

Anti-STK31 Antibody
Rabbit polyclonal antibody to STK31
Catalog # AP59953

Specification

Anti-STK31 Antibody - Product Information

Application	WB
Primary Accession	O9BXU1
Other Accession	O99MW1
Reactivity	Human, Mouse, Rat, Monkey
Host	Rabbit
Clonality	Polyclonal
Calculated MW	115694

Anti-STK31 Antibody - Additional Information

Gene ID 56164

Other Names

SGK396; Serine/threonine-protein kinase 31; Serine/threonine-protein kinase NYD-SPK; Sugen kinase 396; SgK396

Target/Specificity

Recognizes endogenous levels of STK31 protein.

Dilution

WB~~WB (1/500 - 1/1000)

Format

Liquid in 0.42% Potassium phosphate, 0.87% Sodium chloride, pH 7.3, 30% glycerol, and 0.09% (W/V) sodium azide.

Storage

Store at -20 °C. Stable for 12 months from date of receipt

Anti-STK31 Antibody - Protein Information

Name STK31

Synonyms SGK396

Tissue Location

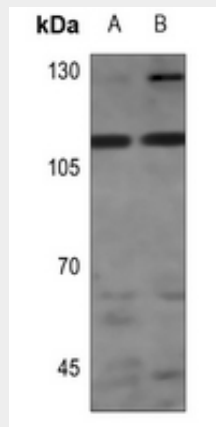
Testis specific.

Anti-STK31 Antibody - Protocols

Provided below are standard protocols that you may find useful for product applications.

- [Western Blot](#)
- [Blocking Peptides](#)
- [Dot Blot](#)
- [Immunohistochemistry](#)
- [Immunofluorescence](#)
- [Immunoprecipitation](#)
- [Flow Cytometry](#)
- [Cell Culture](#)

Anti-STK31 Antibody - Images



Western blot analysis of STK31 expression in PC12 (A), A549 (B) whole cell lysates.

Anti-STK31 Antibody - Background

KLH-conjugated synthetic peptide encompassing a sequence within the center region of human STK31. The exact sequence is proprietary.