

Anti-RAB14 Antibody
Rabbit polyclonal antibody to RAB14
Catalog # AP59951

Specification

Anti-RAB14 Antibody - Product Information

Application	WB
Primary Accession	P61106
Other Accession	O91V41
Reactivity	Human, Mouse, Rat, Monkey, Pig, Chicken
Host	Rabbit
Clonality	Polyclonal
Calculated MW	23897

Anti-RAB14 Antibody - Additional Information

Gene ID 51552

Other Names

Ras-related protein Rab-14

Target/Specificity

Recognizes endogenous levels of RAB14 protein.

Dilution

WB~~WB (1/500 - 1/1000)

Format

Liquid in 0.42% Potassium phosphate, 0.87% Sodium chloride, pH 7.3, 30% glycerol, and 0.09% (W/V) sodium azide.

Storage

Store at -20 °C. Stable for 12 months from date of receipt

Anti-RAB14 Antibody - Protein Information

Name RAB14 ([HGNC:16524](#))

Function

The small GTPases Rab are key regulators of intracellular membrane trafficking, from the formation of transport vesicles to their fusion with membranes. Rabs cycle between an inactive GDP-bound form and an active GTP-bound form that is able to recruit to membranes different set of downstream effectors directly responsible for vesicle formation, movement, tethering and fusion (PubMed: [22595670](http://www.uniprot.org/citations/22595670)). Involved in membrane trafficking between the Golgi complex and endosomes during early embryonic development (By similarity). Regulates the Golgi to endosome transport of FGFR-containing vesicles during early development, a key process for developing basement membrane and epiblast and primitive endoderm lineages during early postimplantation

development. May act by modulating the kinesin KIF16B-cargo association to endosomes (By similarity). Regulates, together with its guanine nucleotide exchange factor DENND6A, the specific endocytic transport of ADAM10, N-cadherin/CDH2 shedding and cell-cell adhesion (PubMed:22595670). Mediates endosomal tethering and fusion through the interaction with RUFY1 and RAB4B (PubMed:20534812).

Cellular Location

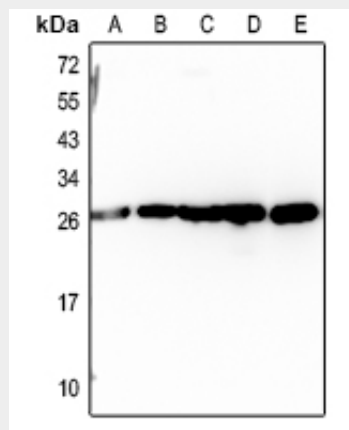
Recycling endosome. Early endosome membrane; Lipid-anchor; Cytoplasmic side. Golgi apparatus membrane; Lipid-anchor; Cytoplasmic side. Golgi apparatus, trans-Golgi network membrane; Lipid-anchor; Cytoplasmic side. Cytoplasmic vesicle, phagosome. Note=Recruited to recycling endosomes by DENND6A (PubMed:22595670). Recruited to phagosomes containing S.aureus or M.tuberculosis (PubMed:21255211).

Anti-RAB14 Antibody - Protocols

Provided below are standard protocols that you may find useful for product applications.

- [Western Blot](#)
- [Blocking Peptides](#)
- [Dot Blot](#)
- [Immunohistochemistry](#)
- [Immunofluorescence](#)
- [Immunoprecipitation](#)
- [Flow Cytometry](#)
- [Cell Culture](#)

Anti-RAB14 Antibody - Images



Western blot analysis of RAB14 expression in A375 (A), U2OS (B), DLD (C), mouse testis (D), rat testis (E) whole cell lysates.

Anti-RAB14 Antibody - Background

KLH-conjugated synthetic peptide encompassing a sequence within the C-term region of human RAB14. The exact sequence is proprietary.