

Anti-JIP4 Antibody
Rabbit polyclonal antibody to JIP4
Catalog # AP59944**Specification**

Anti-JIP4 Antibody - Product Information

Application	WB
Primary Accession	O60271
Other Accession	Q58A65
Reactivity	Human, Mouse, Rat, Bovine
Host	Rabbit
Clonality	Polyclonal
Calculated MW	146205

Anti-JIP4 Antibody - Additional Information**Gene ID** 9043**Other Names**

HSS; KIAA0516; MAPK8IP4; SYD1; C-Jun-amino-terminal kinase-interacting protein 4; JIP-4; JNK-interacting protein 4; Cancer/testis antigen 89; CT89; Human lung cancer oncogene 6 protein; HLC-6; JNK-associated leucine-zipper protein; JLP; Mitogen-activated protein kinase 8-interacting protein 4; Proliferation-inducing protein 6; Protein highly expressed in testis; PHET; Sperm surface protein; Sperm-associated antigen 9; Sperm-specific protein; Sunday driver 1

Target/Specificity

Recognizes endogenous levels of JIP4 protein.

Dilution

WB~~WB (1/500 - 1/1000)

Format

Liquid in 0.42% Potassium phosphate, 0.87% Sodium chloride, pH 7.3, 30% glycerol, and 0.09% (W/V) sodium azide.

Storage

Store at -20 °C. Stable for 12 months from date of receipt

Anti-JIP4 Antibody - Protein Information**Name** SPAG9 ([HGNC:14524](#))**Function**

The JNK-interacting protein (JIP) group of scaffold proteins selectively mediates JNK signaling by aggregating specific components of the MAPK cascade to form a functional JNK signaling module (PubMed:14743216). Regulates lysosomal positioning by acting as an adapter protein which links PIP4P1-positive lysosomes to the dynein- dynactin complex (PubMed:29146937). Assists PIKFYVE selective functionality in microtubule-based endosome-to-TGN trafficking (By similarity).

Cellular Location

Cytoplasm {ECO:0000250|UniProtKB:Q58A65}. Cytoplasm, perinuclear region {ECO:0000250|UniProtKB:Q58A65}. Lysosome membrane. Note=Perinuclear distribution in response to stress signals such as UV radiation {ECO:0000250|UniProtKB:Q58A65}

Tissue Location

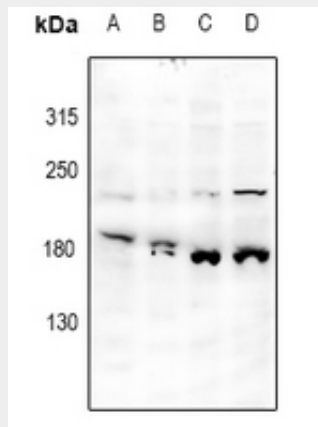
Expressed only in testis on the round spermatids of stage I, II and II. Absent in spermatogonia and spermatocyte [Isoform 3]: Expressed in testis.

Anti-JIP4 Antibody - Protocols

Provided below are standard protocols that you may find useful for product applications.

- [Western Blot](#)
- [Blocking Peptides](#)
- [Dot Blot](#)
- [Immunohistochemistry](#)
- [Immunofluorescence](#)
- [Immunoprecipitation](#)
- [Flow Cytometry](#)
- [Cell Culture](#)

Anti-JIP4 Antibody - Images



Western blot analysis of JIP4 expression in AML12 (A), U87MG (B), EC9706 (C), SGC7901 (D) whole cell lysates.

Anti-JIP4 Antibody - Background

KLH-conjugated synthetic peptide encompassing a sequence within the center region of human JIP4. The exact sequence is proprietary.