

Anti-SNRPD3 Antibody
Rabbit polyclonal antibody to SNRPD3
Catalog # AP59938

Specification

Anti-SNRPD3 Antibody - Product Information

Application	WB
Primary Accession	P62318
Other Accession	P62320
Reactivity	Human, Mouse, Rat, Bovine
Host	Rabbit
Clonality	Polyclonal
Calculated MW	13916

Anti-SNRPD3 Antibody - Additional Information

Gene ID 6634

Other Names

Small nuclear ribonucleoprotein Sm D3; Sm-D3; snRNP core protein D3

Target/Specificity

Recognizes endogenous levels of SNRPD3 protein.

Dilution

WB~~WB (1/500 - 1/1000)

Format

Liquid in 0.42% Potassium phosphate, 0.87% Sodium chloride, pH 7.3, 30% glycerol, and 0.09% (W/V) sodium azide.

Storage

Store at -20 °C. Stable for 12 months from date of receipt

Anti-SNRPD3 Antibody - Protein Information

Name SNRPD3

Function

Plays a role in pre-mRNA splicing as a core component of the spliceosomal U1, U2, U4 and U5 small nuclear ribonucleoproteins (snRNPs), the building blocks of the spliceosome (PubMed:11991638, PubMed:18984161, PubMed:19325628, PubMed:25555158, PubMed:26912367, PubMed:28076346, PubMed:28502770, PubMed:<a

<http://www.uniprot.org/citations/28781166> target="_blank">28781166, PubMed:32494006). Component of both the pre-catalytic spliceosome B complex and activated spliceosome C complexes (PubMed:11991638, PubMed:28076346, PubMed:28502770, PubMed:28781166). As a component of the minor spliceosome, involved in the splicing of U12-type introns in pre-mRNAs (PubMed:15146077, PubMed:33509932). As part of the U7 snRNP it is involved in histone pre-mRNA 3'-end processing (By similarity).

Cellular Location

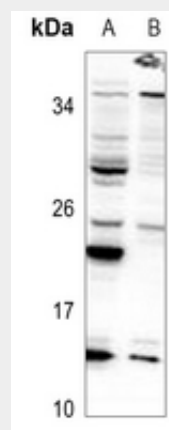
Cytoplasm, cytosol. Nucleus. Note=SMN- mediated assembly into core snRNPs occurs in the cytosol before SMN- mediated transport to the nucleus to be included in spliceosomes

Anti-SNRPD3 Antibody - Protocols

Provided below are standard protocols that you may find useful for product applications.

- [Western Blot](#)
- [Blocking Peptides](#)
- [Dot Blot](#)
- [Immunohistochemistry](#)
- [Immunofluorescence](#)
- [Immunoprecipitation](#)
- [Flow Cytometry](#)
- [Cell Culture](#)

Anti-SNRPD3 Antibody - Images



Western blot analysis of SNRPD3 expression in A549 (A), U87MG (B) whole cell lysates.

Anti-SNRPD3 Antibody - Background

KLH-conjugated synthetic peptide encompassing a sequence within the center region of human SNRPD3. The exact sequence is proprietary.