

Anti-NHE5 Antibody
Rabbit polyclonal antibody to NHE5
Catalog # AP59936

Specification

Anti-NHE5 Antibody - Product Information

Application	WB
Primary Accession	Q14940
Reactivity	Human, Mouse, Rat, Monkey, Pig, Bovine, Dog
Host	Rabbit
Clonality	Polyclonal
Calculated MW	99011

Anti-NHE5 Antibody - Additional Information

Gene ID 6553

Other Names

NHE5; Sodium/hydrogen exchanger 5; Na(+)/H(+) exchanger 5; NHE-5; Solute carrier family 9 member 5

Target/Specificity

Recognizes endogenous levels of NHE5 protein.

Dilution

WB~~WB (1/500 - 1/1000)

Format

Liquid in 0.42% Potassium phosphate, 0.87% Sodium chloride, pH 7.3, 30% glycerol, and 0.09% (W/V) sodium azide.

Storage

Store at -20 °C. Stable for 12 months from date of receipt

Anti-NHE5 Antibody - Protein Information

Name SLC9A5 ([HGNC:11078](#))

Synonyms NHE5

Function

Plasma membrane Na(+)/H(+) antiporter. Mediates the electroneutral exchange of intracellular H(+) ions for extracellular Na(+) in 1:1 stoichiometry, thus regulating intracellular pH homeostasis, in particular in neural tissues (PubMed: [10692428](http://www.uniprot.org/citations/10692428), PubMed: [19276089](http://www.uniprot.org/citations/19276089), PubMed: [24936055](http://www.uniprot.org/citations/24936055), PubMed: [9933641](http://www.uniprot.org/citations/9933641))

target="_blank">9933641). Acts as a negative regulator of dendritic spine growth (PubMed:21551074). Plays a role in postsynaptic remodeling and signaling (PubMed:21551074, PubMed:24006492). Can also contribute to organellar pH regulation, with consequences for receptor tyrosine kinase trafficking (PubMed:24936055).

Cellular Location

Cell membrane; Multi-pass membrane protein. Recycling endosome membrane; Multi-pass membrane protein. Cell projection, dendritic spine membrane; Multi-pass membrane protein. Synaptic cell membrane; Multi-pass membrane protein. Cell junction, focal adhesion. Note=Cycles between recycling endosome and plasma membrane in response to diverse stimuli. Its internalization is clathrin- and beta-arrestin dependent and its plasma membrane insertion from the recycling endosomes requires phosphoinositide 3- kinase (PIK3CA) and SCAMP2.

Tissue Location

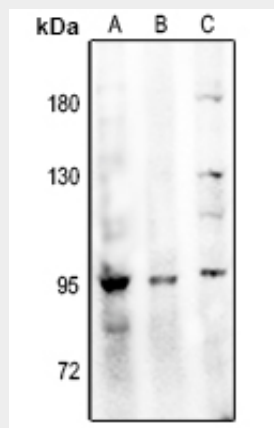
Mainly expressed in brain (PubMed:7759094, PubMed:9933641). Expressed in neurons of the central and peripheral nervous system (PubMed:21551074, PubMed:9933641). Expressed also in testis, spleen, and skeletal muscle (PubMed:7759094)

Anti-NHE5 Antibody - Protocols

Provided below are standard protocols that you may find useful for product applications.

- [Western Blot](#)
- [Blocking Peptides](#)
- [Dot Blot](#)
- [Immunohistochemistry](#)
- [Immunofluorescence](#)
- [Immunoprecipitation](#)
- [Flow Cytometry](#)
- [Cell Culture](#)

Anti-NHE5 Antibody - Images



Western blot analysis of NHE5 expression in A549 (A), HEK293T (B), MEF (C) whole cell lysates.

Anti-NHE5 Antibody - Background

KLH-conjugated synthetic peptide encompassing a sequence within the center region of human

NHE5. The exact sequence is proprietary.