

Anti-PKLR Antibody
Rabbit polyclonal antibody to PKLR
Catalog # AP59931

Specification

Anti-PKLR Antibody - Product Information

Application	WB
Primary Accession	P30613
Other Accession	P53657
Reactivity	Human, Mouse, Rat, Dog
Host	Rabbit
Clonality	Polyclonal
Calculated MW	61830

Anti-PKLR Antibody - Additional Information

Gene ID 5313

Other Names

PK1; PKL; Pyruvate kinase PKLR; Pyruvate kinase 1; Pyruvate kinase isozymes L/R; R-type/L-type pyruvate kinase; Red cell/liver pyruvate kinase

Target/Specificity

Recognizes endogenous levels of PKLR protein.

Dilution

WB~~WB (1/500 - 1/1000)

Format

Liquid in 0.42% Potassium phosphate, 0.87% Sodium chloride, pH 7.3, 30% glycerol, and 0.09% (W/V) sodium azide.

Storage

Store at -20 °C. Stable for 12 months from date of receipt

Anti-PKLR Antibody - Protein Information

Name PKLR

Synonyms PK1, PKL

Function

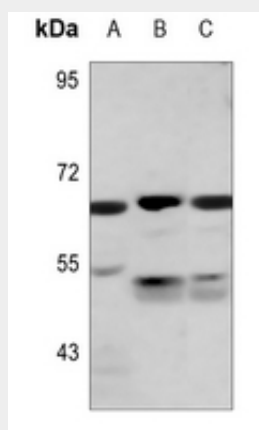
Pyruvate kinase that catalyzes the conversion of phosphoenolpyruvate to pyruvate with the synthesis of ATP, and which plays a key role in glycolysis.

Anti-PKLR Antibody - Protocols

Provided below are standard protocols that you may find useful for product applications.

- [Western Blot](#)
- [Blocking Peptides](#)
- [Dot Blot](#)
- [Immunohistochemistry](#)
- [Immunofluorescence](#)
- [Immunoprecipitation](#)
- [Flow Cytometry](#)
- [Cell Culture](#)

Anti-PKLR Antibody - Images



Western blot analysis of PKLR expression in DLD (A), mouse muscle (B), rat muscle (C) whole cell lysates.

Anti-PKLR Antibody - Background

KLH-conjugated synthetic peptide encompassing a sequence within the C-term region of human PKLR. The exact sequence is proprietary.