

Anti-EPO Antibody
Rabbit polyclonal antibody to EPO
Catalog # AP59923**Specification**

Anti-EPO Antibody - Product Information

Application	WB
Primary Accession	P01588
Other Accession	P07321
Reactivity	Human, Mouse, Rat, Monkey
Host	Rabbit
Clonality	Polyclonal
Calculated MW	21307

Anti-EPO Antibody - Additional Information**Gene ID** 2056**Other Names**

Erythropoietin; Epoetin

Target/Specificity

Recognizes endogenous levels of EPO protein.

Dilution

WB~~WB (1/500 - 1/1000)

Format

Liquid in 0.42% Potassium phosphate, 0.87% Sodium chloride, pH 7.3, 30% glycerol, and 0.09% (W/V) sodium azide.

Storage

Store at -20 °C. Stable for 12 months from date of receipt

Anti-EPO Antibody - Protein Information**Name** EPO**Function**

Hormone involved in the regulation of erythrocyte proliferation and differentiation and the maintenance of a physiological level of circulating erythrocyte mass (PubMed:28283061). Binds to EPOR leading to EPOR dimerization and JAK2 activation thereby activating specific downstream effectors, including STAT1 and STAT3 (PubMed:9774108).

Cellular Location

Secreted.

Tissue Location

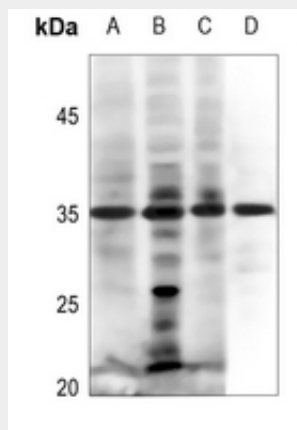
Produced by kidney or liver of adult mammals and by liver of fetal or neonatal mammals.

Anti-EPO Antibody - Protocols

Provided below are standard protocols that you may find useful for product applications.

- [Western Blot](#)
- [Blocking Peptides](#)
- [Dot Blot](#)
- [Immunohistochemistry](#)
- [Immunofluorescence](#)
- [Immunoprecipitation](#)
- [Flow Cytometry](#)
- [Cell Culture](#)

Anti-EPO Antibody - Images



Western blot analysis of EPO expression in HEK293T (A), HeLa (B), A549 (C), rat liver (D) whole cell lysates.

Anti-EPO Antibody - Background

KLH-conjugated synthetic peptide encompassing a sequence within the center region of human EPO. The exact sequence is proprietary.