

Anti-GM-CSF Antibody
Rabbit polyclonal antibody to GM-CSF
Catalog # AP59922**Specification**

Anti-GM-CSF Antibody - Product Information

Application	WB
Primary Accession	P04141
Other Accession	P01587
Reactivity	Human, Mouse, Rat
Host	Rabbit
Clonality	Polyclonal
Calculated MW	16295

Anti-GM-CSF Antibody - Additional Information**Gene ID** 1437**Other Names**

GMCSF; Granulocyte-macrophage colony-stimulating factor; GM-CSF; Colony-stimulating factor; CSF; Molgramostin; Sargramostim

Target/Specificity

Recognizes endogenous levels of GM-CSF protein.

Dilution

WB~~WB (1/500 - 1/1000)

Format

Liquid in 0.42% Potassium phosphate, 0.87% Sodium chloride, pH 7.3, 30% glycerol, and 0.09% (W/V) sodium azide.

Storage

Store at -20 °C. Stable for 12 months from date of receipt

Anti-GM-CSF Antibody - Protein Information**Name** CSF2**Synonyms** GMCSF**Function**

Cytokine that stimulates the growth and differentiation of hematopoietic precursor cells from various lineages, including granulocytes, macrophages, eosinophils and erythrocytes.

Cellular Location

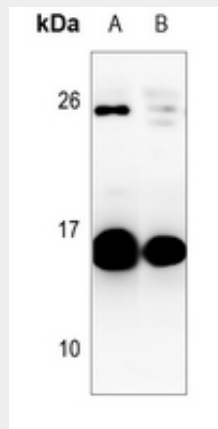
Secreted

Anti-GM-CSF Antibody - Protocols

Provided below are standard protocols that you may find useful for product applications.

- [Western Blot](#)
- [Blocking Peptides](#)
- [Dot Blot](#)
- [Immunohistochemistry](#)
- [Immunofluorescence](#)
- [Immunoprecipitation](#)
- [Flow Cytometry](#)
- [Cell Culture](#)

Anti-GM-CSF Antibody - Images



Western blot analysis of GM-CSF expression in mouse muscle (A), rat muscle (B) whole cell lysates.

Anti-GM-CSF Antibody - Background

KLH-conjugated synthetic peptide encompassing a sequence within the C-term region of human GM-CSF. The exact sequence is proprietary.