

Anti-Calcitonin Antibody
Rabbit polyclonal antibody to Calcitonin
Catalog # AP59919

Specification

Anti-Calcitonin Antibody - Product Information

Application	WB
Primary Accession	P01258
Other Accession	P70160
Reactivity	Human, Mouse, Rat
Host	Rabbit
Clonality	Polyclonal
Calculated MW	15467

Anti-Calcitonin Antibody - Additional Information

Gene ID 796

Other Names
CALC1; Calcitonin

Target/Specificity
Recognizes endogenous levels of Calcitonin protein.

Dilution
WB~~WB (1/500 - 1/1000)

Format
Liquid in 0.42% Potassium phosphate, 0.87% Sodium chloride, pH 7.3, 30% glycerol, and 0.09% (W/V) sodium azide.

Storage
Store at -20 °C. Stable for 12 months from date of receipt

Anti-Calcitonin Antibody - Protein Information

Name CALCA ([HGNC:1437](#))

Synonyms CALC1

Function
[Calcitonin]: Calcitonin is a peptide hormone that causes a rapid but short-lived drop in the level of calcium and phosphate in blood by promoting the incorporation of those ions in the bones. Calcitonin function is mediated by the calcitonin receptor/CALCR and the CALCR-RAMP2 (AMYR2) receptor complex (PubMed: <http://www.uniprot.org/citations/35324283> target="_blank">35324283).

Cellular Location

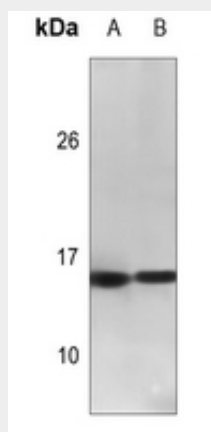
Secreted.

Anti-Calcitonin Antibody - Protocols

Provided below are standard protocols that you may find useful for product applications.

- [Western Blot](#)
- [Blocking Peptides](#)
- [Dot Blot](#)
- [Immunohistochemistry](#)
- [Immunofluorescence](#)
- [Immunoprecipitation](#)
- [Flow Cytometry](#)
- [Cell Culture](#)

Anti-Calcitonin Antibody - Images



Western blot analysis of Calcitonin expression in mouse liver (A), rat brain (B) whole cell lysates.

Anti-Calcitonin Antibody - Background

KLH-conjugated synthetic peptide encompassing a sequence within the center region of human Calcitonin. The exact sequence is proprietary.