

**Anti-LDLRAD2 Antibody**  
Rabbit polyclonal antibody to LDLRAD2  
Catalog # AP59910**Specification**

---

**Anti-LDLRAD2 Antibody - Product Information**

Application	WB
Primary Accession	<a href="#">O5SZI1</a>
Reactivity	Human, Rat
Host	Rabbit
Clonality	Polyclonal
Calculated MW	28581

**Anti-LDLRAD2 Antibody - Additional Information****Gene ID** 401944**Other Names**

Low-density lipoprotein receptor class A domain-containing protein 2

**Target/Specificity**

Recognizes endogenous levels of LDLRAD2 protein.

**Dilution**

WB~~WB (1/500 - 1/1000), IP (1/10 - 1/100)

**Format**

Liquid in 0.42% Potassium phosphate, 0.87% Sodium chloride, pH 7.3, 30% glycerol, and 0.09% (W/V) sodium azide.

**Storage**

Store at -20 °C. Stable for 12 months from date of receipt

**Anti-LDLRAD2 Antibody - Protein Information****Name** LDLRAD2**Cellular Location**

Membrane; Single-pass type I membrane protein.

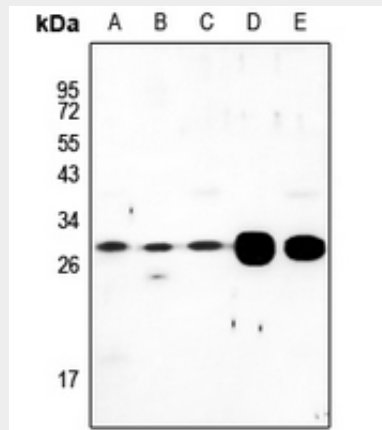
**Anti-LDLRAD2 Antibody - Protocols**

Provided below are standard protocols that you may find useful for product applications.

- [Western Blot](#)
- [Blocking Peptides](#)

- [Dot Blot](#)
- [Immunohistochemistry](#)
- [Immunofluorescence](#)
- [Immunoprecipitation](#)
- [Flow Cytometry](#)
- [Cell Culture](#)

#### Anti-LDLRAD2 Antibody - Images



Western blot analysis of LDLRAD2 expression in HEK293T (A), HepG2 (B), MCF7 (C), MEF (D), C6 (E) whole cell lysates.

#### Anti-LDLRAD2 Antibody - Background

KLH-conjugated synthetic peptide encompassing a sequence within the center region of human LDLRAD2. The exact sequence is proprietary.