

Anti-NANOGP8 Antibody
Rabbit polyclonal antibody to NANOGP8
Catalog # AP59909

Specification

Anti-NANOGP8 Antibody - Product Information

Application	WB
Primary Accession	O6NSW7
Reactivity	Human, Mouse, Rat
Host	Rabbit
Clonality	Polyclonal
Calculated MW	34673

Anti-NANOGP8 Antibody - Additional Information

Other Names

Putative homeobox protein NANOGP8

Target/Specificity

Recognizes endogenous levels of NANOGP8 protein.

Dilution

WB~~WB (1/500 - 1/1000), IP (1/10 - 1/100)

Format

Liquid in 0.42% Potassium phosphate, 0.87% Sodium chloride, pH 7.3, 30% glycerol, and 0.09% (W/V) sodium azide.

Storage

Store at -20 °C. Stable for 12 months from date of receipt

Anti-NANOGP8 Antibody - Protein Information

Name NANOGP8

Function

May act as a transcription regulator (By similarity). When overexpressed, promotes entry of cells into S phase and cell proliferation.

Cellular Location

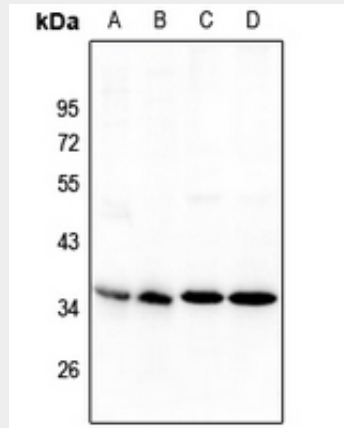
Nucleus {ECO:0000255|PROSITE-ProRule:PRU00108, ECO:0000269|PubMed:16623708}

Anti-NANOGP8 Antibody - Protocols

Provided below are standard protocols that you may find useful for product applications.

- [Western Blot](#)
- [Blocking Peptides](#)
- [Dot Blot](#)
- [Immunohistochemistry](#)
- [Immunofluorescence](#)
- [Immunoprecipitation](#)
- [Flow Cytometry](#)
- [Cell Culture](#)

Anti-NANOGP8 Antibody - Images



Western blot analysis of NANOGP8 expression in PC12 (A), SP20 (B), MCF7 (C), HepG2 (D) whole cell lysates.

Anti-NANOGP8 Antibody - Background

KLH-conjugated synthetic peptide encompassing a sequence within the center region of human NANOGP8. The exact sequence is proprietary.