

Anti-Kappa-actin Antibody
Rabbit polyclonal antibody to Kappa-actin
Catalog # AP59907

Specification

Anti-Kappa-actin Antibody - Product Information

Application	WB
Primary Accession	O562R1
Other Accession	O8BFZ3
Reactivity	Human, Mouse, Rat, Monkey
Host	Rabbit
Clonality	Polyclonal
Calculated MW	42003

Anti-Kappa-actin Antibody - Additional Information

Gene ID 345651

Other Names

Beta-actin-like protein 2; Kappa-actin

Target/Specificity

Recognizes endogenous levels of Kappa-actin protein.

Dilution

WB~~WB (1/500 - 1/1000), IP (1/10 - 1/100)

Format

Liquid in 0.42% Potassium phosphate, 0.87% Sodium chloride, pH 7.3, 30% glycerol, and 0.09% (W/V) sodium azide.

Storage

Store at -20 °C. Stable for 12 months from date of receipt

Anti-Kappa-actin Antibody - Protein Information

Name ACTBL2

Function

Actins are highly conserved proteins that are involved in various types of cell motility and are ubiquitously expressed in all eukaryotic cells.

Cellular Location

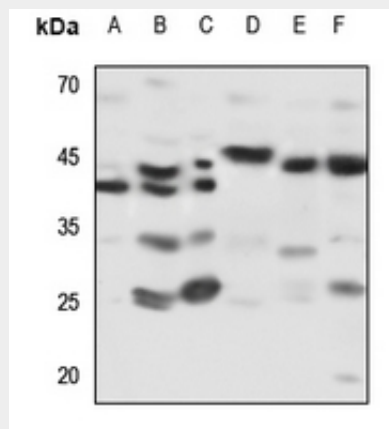
Cytoplasm, cytoskeleton.

Anti-Kappa-actin Antibody - Protocols

Provided below are standard protocols that you may find useful for product applications.

- [Western Blot](#)
- [Blocking Peptides](#)
- [Dot Blot](#)
- [Immunohistochemistry](#)
- [Immunofluorescence](#)
- [Immunoprecipitation](#)

Anti-Kappa-actin Antibody - Images



Western blot analysis of Kappa-actin expression in HEK293T (A), HeLa (B), H460 (C), mouse muscle (D), mouse spleen (E), rat spleen (F) whole cell lysates.

Anti-Kappa-actin Antibody - Background

KLH-conjugated synthetic peptide encompassing a sequence within the center region of human Kappa-actin. The exact sequence is proprietary.