

**Anti-SYNE3 Antibody**  
Rabbit polyclonal antibody to SYNE3  
Catalog # AP59899

**Specification**

---

**Anti-SYNE3 Antibody - Product Information**

Application	WB, IF
Primary Accession	<a href="#">O6ZMZ3</a>
Other Accession	<a href="#">O4FZC9</a>
Reactivity	Human, Mouse, Rat
Host	Rabbit
Clonality	Polyclonal
Calculated MW	112216

**Anti-SYNE3 Antibody - Additional Information**

**Gene ID** 161176

**Other Names**

C14orf49; Nesprin-3; Nuclear envelope spectrin repeat protein 3

**Target/Specificity**

Recognizes endogenous levels of SYNE3 protein.

**Dilution**

WB~~WB (1/500 - 1/1000), IF/IC (1/100 - 1/500)

IF~~WB (1/500 - 1/1000), IF/IC (1/100 - 1/500)

**Format**

Liquid in 0.42% Potassium phosphate, 0.87% Sodium chloride, pH 7.3, 30% glycerol, and 0.09% (W/V) sodium azide.

**Storage**

Store at -20 °C. Stable for 12 months from date of receipt

**Anti-SYNE3 Antibody - Protein Information**

**Name** SYNE3 ([HGNC:19861](#))

**Function**

As a component of the LINC (Linker of Nucleoskeleton and Cytoskeleton) complex involved in the connection between the nuclear lamina and the cytoskeleton. The nucleocytoplasmic interactions established by the LINC complex play an important role in the transmission of mechanical forces across the nuclear envelope and in nuclear movement and positioning. Probable anchoring protein which tethers the nucleus to the cytoskeleton by binding PLEC which can associate with the intermediate filament system. Plays a role in the regulation of aortic epithelial cell morphology, and is required for flow-induced centrosome polarization and directional migration in aortic endothelial cells.

### Cellular Location

Nucleus outer membrane; Single-pass type IV membrane protein. Nucleus envelope. Rough endoplasmic reticulum

### Tissue Location

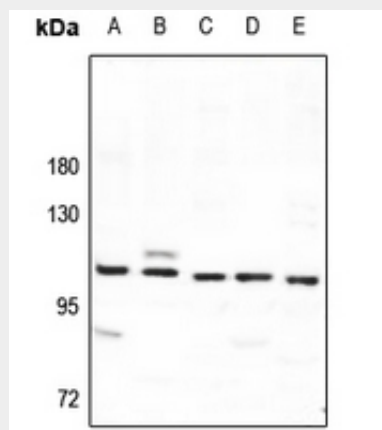
Expressed in aortic endothelial cells (at protein level).

### Anti-SYNE3 Antibody - Protocols

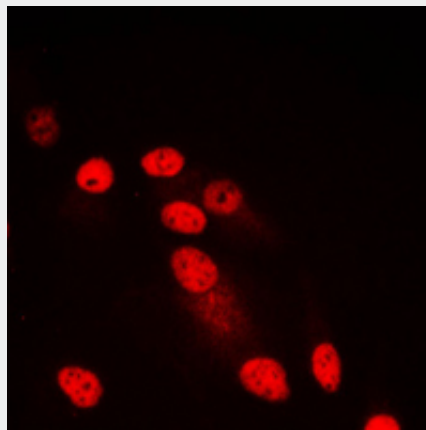
Provided below are standard protocols that you may find useful for product applications.

- [Western Blot](#)
- [Blocking Peptides](#)
- [Dot Blot](#)
- [Immunohistochemistry](#)
- [Immunofluorescence](#)
- [Immunoprecipitation](#)
- [Flow Cytometry](#)
- [Cell Culture](#)

### Anti-SYNE3 Antibody - Images



Western blot analysis of SYNE3 expression in AML12 (A), H9C2 (B), A549 (C), HepG2 (D), HEK293T (E) whole cell lysates.



Immunofluorescent analysis of SYNE3 staining in HepG2 cells. Formalin-fixed cells were

permeabilized with 0.1% Triton X-100 in TBS for 5-10 minutes and blocked with 3% BSA-PBS for 30 minutes at room temperature. Cells were probed with the primary antibody in 3% BSA-PBS and incubated overnight at 4 °C in a humidified chamber. Cells were washed with PBST and incubated with a DyLight 594-conjugated secondary antibody (red) in PBS at room temperature in the dark.

#### **Anti-SYNE3 Antibody - Background**

KLH-conjugated synthetic peptide encompassing a sequence within the center region of human SYNE3. The exact sequence is proprietary.