

Anti-AGBL4 Antibody
Rabbit polyclonal antibody to AGBL4
Catalog # AP59885

Specification

Anti-AGBL4 Antibody - Product Information

Application	WB
Primary Accession	Q5VU57
Reactivity	Human, Mouse, Rat
Host	Rabbit
Clonality	Polyclonal
Calculated MW	58230

Anti-AGBL4 Antibody - Additional Information

Gene ID 84871

Other Names

CCP6; Cytosolic carboxypeptidase 6; ATP/GTP-binding protein-like 4

Target/Specificity

Recognizes endogenous levels of AGBL4 protein.

Dilution

WB~~WB (1/500 - 1/1000), IP (1/10 - 1/100)

Format

Liquid in 0.42% Potassium phosphate, 0.87% Sodium chloride, pH 7.3, 30% glycerol, and 0.09% (W/V) sodium azide.

Storage

Store at -20 °C. Stable for 12 months from date of receipt

Anti-AGBL4 Antibody - Protein Information

Name AGBL4 ([HGNC:25892](#))

Synonyms CCP6

Function

Metalloprotease that mediates protein deglutamylation of tubulin and non-tubulin target proteins. Catalyzes the removal of polyglutamate side chains present on the gamma-carboxyl group of glutamate residues within the C-terminal tail of tubulin protein. Specifically cleaves tubulin long-side-chains, while it is not able to remove the branching point glutamate. Also catalyzes the removal of polyglutamate residues from the carboxy-terminus of non-tubulin proteins such as MYLK. Mediates the deglutamylation of nucleotidyltransferase CGAS, leading to CGAS antiviral defense response activation (By similarity). Involved in KLF4 deglutamylation which promotes KLF4 proteasome-mediated degradation, thereby negatively regulating cell pluripotency

maintenance and embryogenesis (PubMed:29593216).

Cellular Location

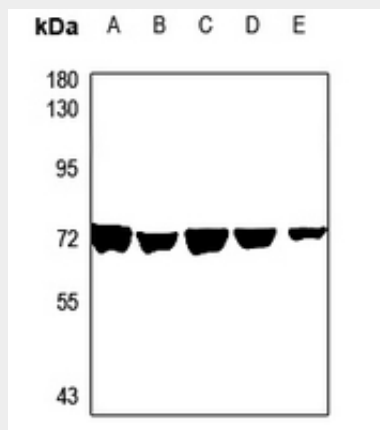
Cytoplasm, cytosol {ECO:0000250|UniProtKB:Q09LZ8}. Cytoplasm, cytoskeleton, microtubule organizing center, centrosome, centriole Golgi apparatus. Cytoplasm, cytoskeleton, cilium basal body. Note=Colocalizes with gamma-tubulin in the centrioles at interphase and dividing cells and with glutamylated tubulin in basal bodies of ciliated cells

Anti-AGBL4 Antibody - Protocols

Provided below are standard protocols that you may find useful for product applications.

- [Western Blot](#)
- [Blocking Peptides](#)
- [Dot Blot](#)
- [Immunohistochemistry](#)
- [Immunofluorescence](#)
- [Immunoprecipitation](#)
- [Flow Cytometry](#)
- [Cell Culture](#)

Anti-AGBL4 Antibody - Images



Western blot analysis of AGBL4 expression in CT26 (A), PC12 (B), HeLa (C), COS7 (D), PC3 (E) whole cell lysates.

Anti-AGBL4 Antibody - Background

KLH-conjugated synthetic peptide encompassing a sequence within the C-term region of human AGBL4. The exact sequence is proprietary.