

Anti-HORMAD1 Antibody
Rabbit polyclonal antibody to HORMAD1
Catalog # AP59881

Specification

Anti-HORMAD1 Antibody - Product Information

Application	WB
Primary Accession	Q86X24
Reactivity	Human, Mouse, Monkey
Host	Rabbit
Clonality	Polyclonal
Calculated MW	45200

Anti-HORMAD1 Antibody - Additional Information

Gene ID 84072

Other Names

NOHMA; HORMA domain-containing protein 1; Cancer/testis antigen 46; CT46; Newborn ovary HORMA protein

Target/Specificity

Recognizes endogenous levels of HORMAD1 protein.

Dilution

WB~~WB (1/500 - 1/1000)

Format

Liquid in 0.42% Potassium phosphate, 0.87% Sodium chloride, pH 7.3, 30% glycerol, and 0.09% (W/V) sodium azide.

Storage

Store at -20 °C. Stable for 12 months from date of receipt

Anti-HORMAD1 Antibody - Protein Information

Name HORMAD1 ([HGNC:25245](#))

Function

Plays a key role in meiotic progression. Regulates 3 different functions during meiosis: ensures that sufficient numbers of processed DNA double-strand breaks (DSBs) are available for successful homology search by increasing the steady-state numbers of single-stranded DSB ends. Promotes synaptonemal-complex formation independently of its role in homology search. Plays a key role in the male mid-pachytene checkpoint and the female meiotic prophase checkpoint: required for efficient build-up of ATR activity on unsynapsed chromosome regions, a process believed to form the basis of meiotic silencing of unsynapsed chromatin (MSUC) and meiotic prophase quality control in both sexes.

Cellular Location

Nucleus {ECO:0000250|UniProtKB:Q9D5T7}. Chromosome {ECO:0000250|UniProtKB:Q9D5T7}. Note=Preferentially localizes to unsynapsed or desynapsed chromosomal regions during the prophase I stage of meiosis. TRIP13 is required for depletion from synapsed chromosomes. The expression of the phosphorylated form at Ser- 377 is restricted to unsynapsed chromosomal regions (By similarity) {ECO:0000250|UniProtKB:Q9D5T7}

Tissue Location

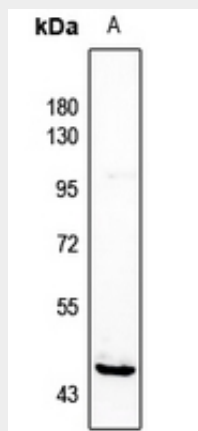
Testis-specific. Over-expressed in carcinomas.

Anti-HORMAD1 Antibody - Protocols

Provided below are standard protocols that you may find useful for product applications.

- [Western Blot](#)
- [Blocking Peptides](#)
- [Dot Blot](#)
- [Immunohistochemistry](#)
- [Immunofluorescence](#)
- [Immunoprecipitation](#)
- [Flow Cytometry](#)
- [Cell Culture](#)

Anti-HORMAD1 Antibody - Images



Western blot analysis of HORMAD1 expression in mouse kidney (A) whole cell lysates.

Anti-HORMAD1 Antibody - Background

KLH-conjugated synthetic peptide encompassing a sequence within the C-term region of human HORMAD1. The exact sequence is proprietary.