

Anti-LASS4 Antibody
Rabbit polyclonal antibody to LASS4
Catalog # AP59872

Specification

Anti-LASS4 Antibody - Product Information

Application	WB
Primary Accession	O9HA82
Other Accession	O9D6J1
Reactivity	Human, Mouse, Rat, Monkey
Host	Rabbit
Clonality	Polyclonal
Calculated MW	46399

Anti-LASS4 Antibody - Additional Information

Gene ID 79603

Other Names

LASS4; Ceramide synthase 4; CerS4; LAG1 longevity assurance homolog 4

Target/Specificity

Recognizes endogenous levels of LASS4 protein.

Dilution

WB~~WB (1/500 - 1/1000), IP (1/10 - 1/100)

Format

Liquid in 0.42% Potassium phosphate, 0.87% Sodium chloride, pH 7.3, 30% glycerol, and 0.09% (W/V) sodium azide.

Storage

Store at -20 °C. Stable for 12 months from date of receipt

Anti-LASS4 Antibody - Protein Information

Name CERS4 {ECO:0000303|PubMed:17977534, ECO:0000312|HGNC:HGNC:23747}

Function

Ceramide synthase that catalyzes formation of ceramide from sphinganine and acyl-CoA substrates, with high selectivity toward long and very-long chains (C18:0-C22:0) as acyl donor.

Cellular Location

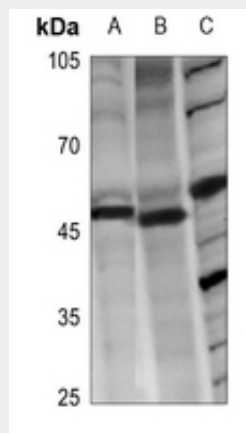
Endoplasmic reticulum membrane {ECO:0000250|UniProtKB:Q9D6J1}; Multi-pass membrane protein

Anti-LASS4 Antibody - Protocols

Provided below are standard protocols that you may find useful for product applications.

- [Western Blot](#)
- [Blocking Peptides](#)
- [Dot Blot](#)
- [Immunohistochemistry](#)
- [Immunofluorescence](#)
- [Immunoprecipitation](#)
- [Flow Cytometry](#)
- [Cell Culture](#)

Anti-LASS4 Antibody - Images



Western blot analysis of LASS4 expression in PC3 (A), PC12 (B), AML12 (C) whole cell lysates.

Anti-LASS4 Antibody - Background

KLH-conjugated synthetic peptide encompassing a sequence within the center region of human LASS4. The exact sequence is proprietary.