

Anti-EPS8L2 Antibody
Rabbit polyclonal antibody to EPS8L2
Catalog # AP59866

Specification

Anti-EPS8L2 Antibody - Product Information

Application	WB, IF
Primary Accession	O9H6S3
Other Accession	O99K30
Reactivity	Human, Mouse, Rat, Bovine
Host	Rabbit
Clonality	Polyclonal
Calculated MW	80621

Anti-EPS8L2 Antibody - Additional Information

Gene ID 64787

Other Names

EPS8R2; Epidermal growth factor receptor kinase substrate 8-like protein 2; EPS8-like protein 2; Epidermal growth factor receptor pathway substrate 8-related protein 2; EPS8-related protein 2

Target/Specificity

Recognizes endogenous levels of EPS8L2 protein.

Dilution

WB~~WB (1/500 - 1/1000), IH (1/100 - 1/200), IF/IC (1/100 - 1/500), IP (1/10 - 1/100)
IF~~WB (1/500 - 1/1000), IH (1/100 - 1/200), IF/IC (1/100 - 1/500), IP (1/10 - 1/100)

Format

Liquid in 0.42% Potassium phosphate, 0.87% Sodium chloride, pH 7.3, 30% glycerol, and 0.09% (W/V) sodium azide.

Storage

Store at -20 °C. Stable for 12 months from date of receipt

Anti-EPS8L2 Antibody - Protein Information

Name EPS8L2

Synonyms EPS8R2

Function

Stimulates guanine exchange activity of SOS1. May play a role in membrane ruffling and remodeling of the actin cytoskeleton. In the cochlea, is required for stereocilia maintenance in adult hair cells (By similarity).

Cellular Location

Cytoplasm. Cell projection, stereocilium {ECO:0000250|UniProtKB:Q99K30}. Note=Localizes at the tips of the stereocilia of the inner and outer hair cells {ECO:0000250|UniProtKB:Q99K30}

Tissue Location

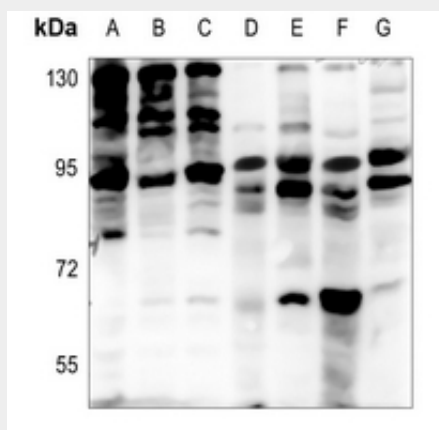
Detected in fibroblasts and placenta.

Anti-EPS8L2 Antibody - Protocols

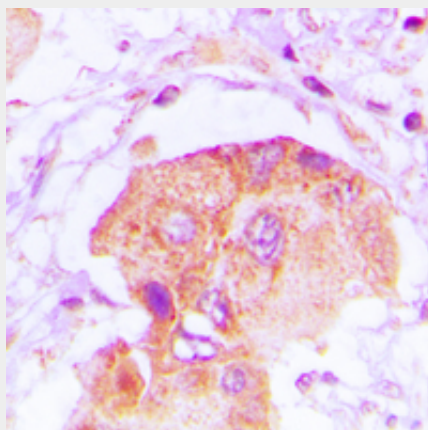
Provided below are standard protocols that you may find useful for product applications.

- [Western Blot](#)
- [Blocking Peptides](#)
- [Dot Blot](#)
- [Immunohistochemistry](#)
- [Immunofluorescence](#)
- [Immunoprecipitation](#)
- [Flow Cytometry](#)
- [Cell Culture](#)

Anti-EPS8L2 Antibody - Images

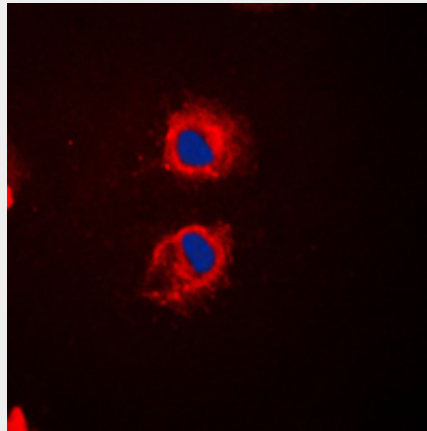


Western blot analysis of EPS8L2 expression in HEK293T (A), A549 (B), H1688 (C), mouse liver (D), mouse muscle (E), rat liver (F), rat muscle (G) whole cell lysates.



Immunohistochemical analysis of EPS8L2 staining in human lung cancer formalin fixed paraffin embedded tissue section. The section was pre-treated using heat mediated antigen retrieval with

sodium citrate buffer (pH 6.0). The section was then incubated with the antibody at room temperature and detected using an HRP conjugated compact polymer system. DAB was used as the chromogen. The section was then counterstained with haematoxylin and mounted with DPX.



Immunofluorescent analysis of EPS8L2 staining in HeLa cells. Formalin-fixed cells were permeabilized with 0.1% Triton X-100 in TBS for 5-10 minutes and blocked with 3% BSA-PBS for 30 minutes at room temperature. Cells were probed with the primary antibody in 3% BSA-PBS and incubated overnight at 4 °C in a humidified chamber. Cells were washed with PBST and incubated with a DyLight 594-conjugated secondary antibody (red) in PBS at room temperature in the dark. DAPI was used to stain the cell nuclei (blue).

Anti-EPS8L2 Antibody - Background

KLH-conjugated synthetic peptide encompassing a sequence within the N-term region of human EPS8L2. The exact sequence is proprietary.