

**Anti-SENP2 Antibody**  
Rabbit polyclonal antibody to SENP2  
Catalog # AP59864

## Specification

---

### Anti-SENP2 Antibody - Product Information

Application	WB
Primary Accession	<a href="#">O9HC62</a>
Reactivity	Human, Mouse, Rat
Host	Rabbit
Clonality	Polyclonal
Calculated MW	67855

### Anti-SENP2 Antibody - Additional Information

Gene ID 59343

#### Other Names

KIAA1331; Sentrin-specific protease 2; Axam2; SMT3-specific isopeptidase 2; Smt3ip2; Sentrin/SUMO-specific protease SENP2

#### Target/Specificity

Recognizes endogenous levels of SENP2 protein.

#### Dilution

WB~~WB (1/500 - 1/1000), IH (1/100 - 1/200)

#### Format

Liquid in 0.42% Potassium phosphate, 0.87% Sodium chloride, pH 7.3, 30% glycerol, and 0.09% (W/V) sodium azide.

#### Storage

Store at -20 °C. Stable for 12 months from date of receipt

### Anti-SENP2 Antibody - Protein Information

**Name** SENP2 {ECO:0000303|PubMed:10718198, ECO:0000312|HGNC:HGNC:23116}

#### Function

Protease that catalyzes two essential functions in the SUMO pathway (PubMed:<a href="http://www.uniprot.org/citations/11896061" target="\_blank">11896061</a>, PubMed:<a href="http://www.uniprot.org/citations/12192048" target="\_blank">12192048</a>, PubMed:<a href="http://www.uniprot.org/citations/15296745" target="\_blank">15296745</a>, PubMed:<a href="http://www.uniprot.org/citations/20194620" target="\_blank">20194620</a>, PubMed:<a href="http://www.uniprot.org/citations/21965678" target="\_blank">21965678</a>). The first is the hydrolysis of an alpha-linked peptide bond at the C-terminal end of the small ubiquitin- like modifier (SUMO) propeptides, SUMO1, SUMO2 and SUMO3 leading to the mature form of the proteins (PubMed:<a href="http://www.uniprot.org/citations/15296745"

target="\_blank">15296745</a>). The second is the deconjugation of SUMO1, SUMO2 and SUMO3 from targeted proteins, by cleaving an epsilon-linked peptide bond between the C-terminal glycine of the mature SUMO and the lysine epsilon-amino group of the target protein (PubMed:<a href="http://www.uniprot.org/citations/15296745" target="\_blank">15296745</a>, PubMed:<a href="http://www.uniprot.org/citations/20194620" target="\_blank">20194620</a>, PubMed:<a href="http://www.uniprot.org/citations/21965678" target="\_blank">21965678</a>). May down-regulate CTNNB1 levels and thereby modulate the Wnt pathway (By similarity). Deconjugates SUMO2 from MTA1 (PubMed:<a href="http://www.uniprot.org/citations/21965678" target="\_blank">21965678</a>). Plays a dynamic role in adipogenesis by desumoylating and promoting the stabilization of CEBPB (PubMed:<a href="http://www.uniprot.org/citations/20194620" target="\_blank">20194620</a>). Acts as a regulator of the cGAS-STING pathway by catalyzing desumoylation of CGAS and STING1 during the late phase of viral infection (By similarity).

#### Cellular Location

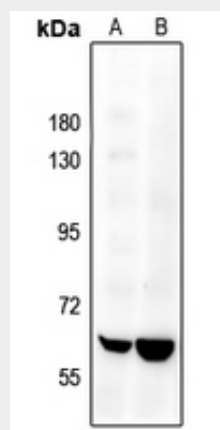
Nucleus, nuclear pore complex. Nucleus membrane; Peripheral membrane protein; Nucleoplasmic side. Cytoplasm Note=Shuttles between cytoplasm and nucleus

#### Anti-SENP2 Antibody - Protocols

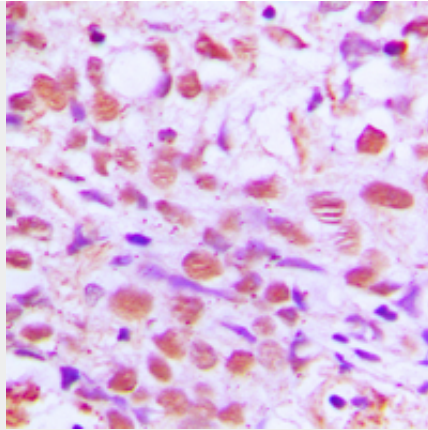
Provided below are standard protocols that you may find useful for product applications.

- [Western Blot](#)
- [Blocking Peptides](#)
- [Dot Blot](#)
- [Immunohistochemistry](#)
- [Immunofluorescence](#)
- [Immunoprecipitation](#)
- [Flow Cytometry](#)
- [Cell Culture](#)

#### Anti-SENP2 Antibody - Images



Western blot analysis of SENP2 expression in CT26 (A), C6 (B) whole cell lysates.



Immunohistochemical analysis of SENP2 staining in human breast cancer formalin fixed paraffin embedded tissue section. The section was pre-treated using heat mediated antigen retrieval with sodium citrate buffer (pH 6.0). The section was then incubated with the antibody at room temperature and detected using an HRP conjugated compact polymer system. DAB was used as the chromogen. The section was then counterstained with haematoxylin and mounted with DPX.

#### **Anti-SENP2 Antibody - Background**

KLH-conjugated synthetic peptide encompassing a sequence within the C-term region of human SENP2. The exact sequence is proprietary.