

Anti-RHCG Antibody
Rabbit polyclonal antibody to RHCG
Catalog # AP59841

Specification

Anti-RHCG Antibody - Product Information

Application	WB
Primary Accession	O9UBD6
Reactivity	Human
Host	Rabbit
Clonality	Polyclonal
Calculated MW	53179

Anti-RHCG Antibody - Additional Information

Gene ID 51458

Other Names

C15orf6; CDRC2; PDRC2; RHGK; Ammonium transporter Rh type C; Rh glycoprotein kidney; Rhesus blood group family type C glycoprotein; Rh family type C glycoprotein; Rh type C glycoprotein; Tumor-related protein DRC2

Target/Specificity

Recognizes endogenous levels of RHCG protein.

Dilution

WB~~WB (1/500 - 1/1000)

Format

Liquid in 0.42% Potassium phosphate, 0.87% Sodium chloride, pH 7.3, 30% glycerol, and 0.09% (W/V) sodium azide.

Storage

Store at -20 °C. Stable for 12 months from date of receipt

Anti-RHCG Antibody - Protein Information

Name RHCG

Synonyms C15orf6, CDRC2, PDRC2, RHGK

Function

Ammonium transporter involved in the maintenance of acid-base homeostasis. Transports ammonium and its related derivative methylammonium across the plasma membrane of epithelial cells likely contributing to renal transepithelial ammonia transport and ammonia metabolism. Postulated to primarily mediate an electroneutral bidirectional transport of NH₃ ammonia species according to a mechanism that implies interaction of an NH₄(+) ion with acidic residues of the pore entry followed by dissociation of NH₄(+) into NH₃ and H(+). As a result NH₃ transits through

the central pore and is protonated on the extracellular side reforming NH₄(+) (PubMed:11062476, PubMed:14761968, PubMed:15929723, PubMed:16477434, PubMed:16580862, PubMed:24077989). May act as a CO₂ channel providing for renal acid secretion (PubMed:24077989).

Cellular Location

Cell membrane; Multi-pass membrane protein. Apical cell membrane; Multi-pass membrane protein. Note=Also detected at the basolateral membrane and in subapical vesicles.

Tissue Location

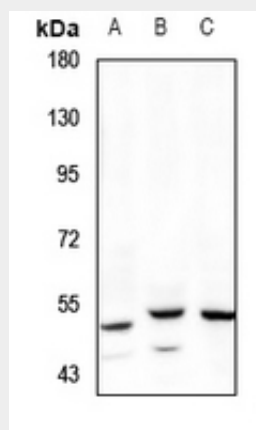
Expressed in brain, testis, placenta, pancreas, esophagus and prostate. Expressed in squamous epithelial tissues (at protein level). Expressed in kidney.

Anti-RHCG Antibody - Protocols

Provided below are standard protocols that you may find useful for product applications.

- [Western Blot](#)
- [Blocking Peptides](#)
- [Dot Blot](#)
- [Immunohistochemistry](#)
- [Immunofluorescence](#)
- [Immunoprecipitation](#)
- [Flow Cytometry](#)
- [Cell Culture](#)

Anti-RHCG Antibody - Images



Western blot analysis of RHCG expression in A549 (A), Panc1 (B), MEF (C) whole cell lysates.

Anti-RHCG Antibody - Background

KLH-conjugated synthetic peptide encompassing a sequence within the center region of human RHCG. The exact sequence is proprietary.