

Anti-BMP10 Antibody
Rabbit polyclonal antibody to BMP10
Catalog # AP59832

Specification

Anti-BMP10 Antibody - Product Information

Application	WB
Primary Accession	O95393
Other Accession	O9R229
Reactivity	Human, Mouse, Rat
Host	Rabbit
Clonality	Polyclonal
Calculated MW	48047

Anti-BMP10 Antibody - Additional Information

Gene ID 27302

Other Names

Bone morphogenetic protein 10; BMP-10

Target/Specificity

Recognizes endogenous levels of BMP10 protein.

Dilution

WB~~WB (1/500 - 1/1000)

Format

Liquid in 0.42% Potassium phosphate, 0.87% Sodium chloride, pH 7.3, 30% glycerol, and 0.09% (W/V) sodium azide.

Storage

Store at -20 °C. Stable for 12 months from date of receipt

Anti-BMP10 Antibody - Protein Information

Name BMP10

Function

Required for maintaining the proliferative activity of embryonic cardiomyocytes by preventing premature activation of the negative cell cycle regulator CDKN1C/p57KIP and maintaining the required expression levels of cardiogenic factors such as MEF2C and NKX2-5. Acts as a ligand for ACVRL1/ALK1, BMPR1A/ALK3 and BMPR1B/ALK6, leading to activation of SMAD1, SMAD5 and SMAD8 transcription factors. Inhibits endothelial cell migration and growth. May reduce cell migration and cell matrix adhesion in breast cancer cell lines.

Cellular Location

Secreted.

Tissue Location

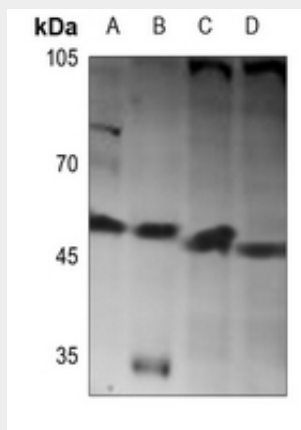
Detected in mammary epithelia (at protein level).

Anti-BMP10 Antibody - Protocols

Provided below are standard protocols that you may find useful for product applications.

- [Western Blot](#)
- [Blocking Peptides](#)
- [Dot Blot](#)
- [Immunohistochemistry](#)
- [Immunofluorescence](#)
- [Immunoprecipitation](#)
- [Flow Cytometry](#)
- [Cell Culture](#)

Anti-BMP10 Antibody - Images



Western blot analysis of BMP10 expression in mouse liver (A), rat heart (B), Jurkat (C), HepG2 (D) whole cell lysates.

Anti-BMP10 Antibody - Background

KLH-conjugated synthetic peptide encompassing a sequence within the center region of human BMP10. The exact sequence is proprietary.