

Anti-RAB38 Antibody
Rabbit polyclonal antibody to RAB38
Catalog # AP59821**Specification**

Anti-RAB38 Antibody - Product Information

Application	WB
Primary Accession	P57729
Other Accession	Q8QZZ8
Reactivity	Human, Mouse, Rat
Host	Rabbit
Clonality	Polyclonal
Calculated MW	23712

Anti-RAB38 Antibody - Additional Information**Gene ID** 23682**Other Names**

Ras-related protein Rab-38; Melanoma antigen NY-MEL-1

Target/Specificity

Recognizes endogenous levels of RAB38 protein.

Dilution

WB~~WB (1/500 - 1/1000)

Format

Liquid in 0.42% Potassium phosphate, 0.87% Sodium chloride, pH 7.3, 30% glycerol, and 0.09% (W/V) sodium azide.

Storage

Store at -20 °C. Stable for 12 months from date of receipt

Anti-RAB38 Antibody - Protein Information**Name** RAB38**Function**

May be involved in melanosomal transport and docking. Involved in the proper sorting of TYRP1. Involved in peripheral melanosomal distribution of TYRP1 in melanocytes; the function, which probably is implicating vesicle-trafficking, includes cooperation with ANKRD27 and VAMP7 (By similarity). Plays a role in the maturation of phagosomes that engulf pathogens, such as S.aureus and M.tuberculosis (PubMed:21255211). Plays an important role in the control of melanin production and melanosome biogenesis (PubMed:23084991). In concert with RAB32, regulates the proper trafficking of melanogenic enzymes TYR, TYRP1 and DCT/TYRP2 to melanosomes in melanocytes (By similarity).

Cellular Location

Cell membrane; Lipid-anchor; Cytoplasmic side. Melanosome. Cytoplasmic vesicle, phagosome. Cytoplasmic vesicle, phagosome membrane; Lipid-anchor; Cytoplasmic side. Melanosome membrane Note=Recruited to phagosomes containing S.aureus or M.tuberculosis (PubMed:21255211). The BLOC-3 complex, a heterodimer of HPS1 and HPS4 promotes its membrane localization (PubMed:23084991)

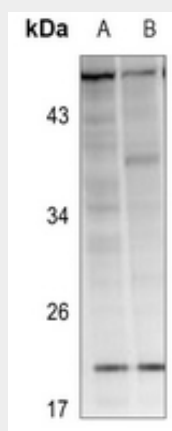
Tissue Location

Expressed in melanocytes.

Anti-RAB38 Antibody - Protocols

Provided below are standard protocols that you may find useful for product applications.

- [Western Blot](#)
- [Blocking Peptides](#)
- [Dot Blot](#)
- [Immunohistochemistry](#)
- [Immunofluorescence](#)
- [Immunoprecipitation](#)
- [Flow Cytometry](#)
- [Cell Culture](#)

Anti-RAB38 Antibody - Images

Western blot analysis of RAB38 expression in PC3 (A), A2780 (B) whole cell lysates.

Anti-RAB38 Antibody - Background

KLH-conjugated synthetic peptide encompassing a sequence within the center region of human RAB38. The exact sequence is proprietary.