

**Anti-Tetraspanin 9 Antibody**  
Rabbit polyclonal antibody to Tetraspanin 9  
Catalog # AP59803

**Specification**

---

**Anti-Tetraspanin 9 Antibody - Product Information**

Application	WB
Primary Accession	<a href="#">O75954</a>
Reactivity	Human, Mouse, Rat, SARS
Host	Rabbit
Clonality	Polyclonal
Calculated MW	26779

**Anti-Tetraspanin 9 Antibody - Additional Information**

**Gene ID** 10867

**Other Names**

NET5; Tetraspanin-9; Tspan-9; Tetraspan NET-5

**Target/Specificity**

Recognizes endogenous levels of Tetraspanin 9 protein.

**Dilution**

WB~~WB (1/500 - 1/1000)

**Format**

Liquid in 0.42% Potassium phosphate, 0.87% Sodium chloride, pH 7.3, 30% glycerol, and 0.09% (W/V) sodium azide.

**Storage**

Store at -20 °C. Stable for 12 months from date of receipt

**Anti-Tetraspanin 9 Antibody - Protein Information**

**Name** TSPAN9

**Synonyms** NET5

**Cellular Location**

Membrane; Multi-pass membrane protein. Note=Colocalizes with GP6 in tetraspanin microdomains on the platelet surface.

**Tissue Location**

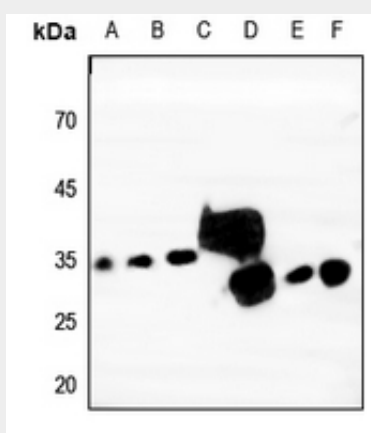
Expressed in megakaryocytes and platelets (at protein level).

## Anti-Tetraspanin 9 Antibody - Protocols

Provided below are standard protocols that you may find useful for product applications.

- [Western Blot](#)
- [Blocking Peptides](#)
- [Dot Blot](#)
- [Immunohistochemistry](#)
- [Immunofluorescence](#)
- [Immunoprecipitation](#)
- [Flow Cytometry](#)
- [Cell Culture](#)

## Anti-Tetraspanin 9 Antibody - Images



Western blot analysis of Tetraspanin 9 expression in HEK293T (A), Hela (B), HGC27 (C), mouse kidney (D), rat lung (E), rat kidney (F) whole cell lysates.

## Anti-Tetraspanin 9 Antibody - Background

KLH-conjugated synthetic peptide encompassing a sequence within the center region of human Tetraspanin 9. The exact sequence is proprietary.