

**Anti-AASS Antibody**  
Rabbit polyclonal antibody to AASS  
Catalog # AP59791

**Specification**

---

**Anti-AASS Antibody - Product Information**

Application	WB
Primary Accession	<a href="#">O9UDR5</a>
Reactivity	Human
Host	Rabbit
Clonality	Polyclonal
Calculated MW	102132

**Anti-AASS Antibody - Additional Information**

**Gene ID** 10157

**Other Names**

Alpha-aminoadipic semialdehyde synthase mitochondrial; LKR/SDH

**Target/Specificity**

Recognizes endogenous levels of AASS protein.

**Dilution**

WB~~WB (1/500 - 1/1000), IP (1/10 - 1/100)

**Format**

Liquid in 0.42% Potassium phosphate, 0.87% Sodium chloride, pH 7.3, 30% glycerol, and 0.09% (W/V) sodium azide.

**Storage**

Store at -20 °C. Stable for 12 months from date of receipt

**Anti-AASS Antibody - Protein Information**

**Name** AASS ([HGNC:17366](#))

**Function**

Bifunctional enzyme that catalyzes the first two steps in lysine degradation.

**Cellular Location**

Mitochondrion.

**Tissue Location**

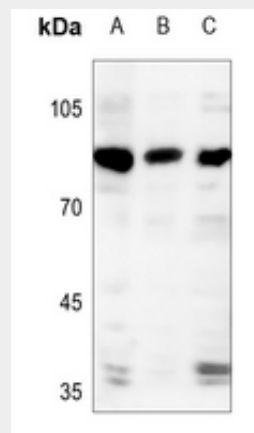
Expressed in all 16 tissues examined with highest expression in the liver

## Anti-AASS Antibody - Protocols

Provided below are standard protocols that you may find useful for product applications.

- [Western Blot](#)
- [Blocking Peptides](#)
- [Dot Blot](#)
- [Immunohistochemistry](#)
- [Immunofluorescence](#)
- [Immunoprecipitation](#)
- [Flow Cytometry](#)
- [Cell Culture](#)

## Anti-AASS Antibody - Images



Western blot analysis of AASS expression in HEK293T (A), U2OS (B), H446 (C) whole cell lysates.

## Anti-AASS Antibody - Background

KLH-conjugated synthetic peptide encompassing a sequence within the center region of human AASS. The exact sequence is proprietary.